

Bend				End Cap		Duck Foot Bend		
Pipe Ø	90°	45°	30°	Pipe Ø		Pipe Ø A	Flange DN	
63	●	●		63	●	90	80	●
75	●	●		75	●	110	100	●
90	●	●	●	90	●			
110	●	●	●	110	●			
125	●	●		125	●			
140	●	●		140	●			
160	●	●	●	160	●			
180	●	●		180	●			
200	●	●		200	●			
225	●	●		225	●			
250	●	●		250	●			
280	●	●		280	●			
315	●	●		315	●			

**for PE (PE 80/100) and PVC pipes up to PN 16**  
(DIN 8074, 8061 / 8062)

**total restraint -**

**minimal pipe insertion force - easy to dismantle**

for water and non aggressive effluent

The pipe is sealed with a lip seal.

Minimal pipe insertion force is required for pushing the pipe end into the seal chamfer with an appropriate chamfer.

The pipe restraining system is separate from the sealing system and is activated by tightening the lock ring.

For thinwalled PE-pipes (up to 3mm wall thickness) and low internal pressure we recommend using a support liner (see page D 2/4).

### Bend

**No. 8535** 90°

**No. 8545** 45°

**No. 8555** 30°



Assembly instructions and tensile load see "page M 6/2"

#### Material:

#### Body (1), Lock ring (5)

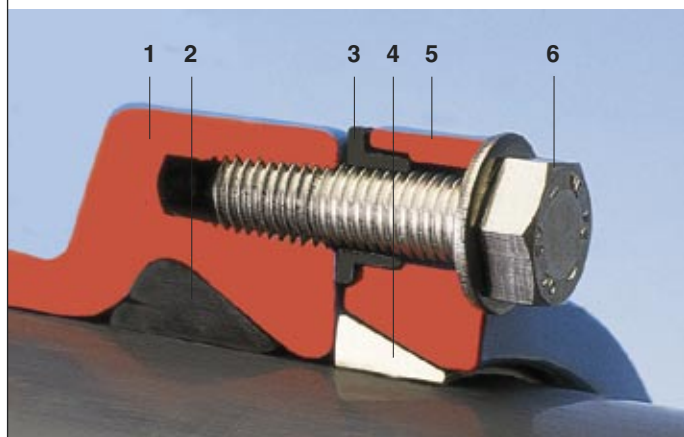
of ductile iron EN-GJS-400-18 according to EN 1563 (GGG 400 - DIN 1693)  
epoxy powder coated

**Lip seal (2)** of elastomer, suitable for potable water

**Spacer bushes (3)** of PE

**Grip ring (4)** Ms 58 from DN 300 Rg7

**Bolts (6)** A 2 (stainless)



### End Cap

**No. 8075**

with lateral 1" female threaded outlet

Threaded outlets  
1¼" / 1½" / 2"  
as well as axial version on request



### Duck Foot Bend

**No. 5045**



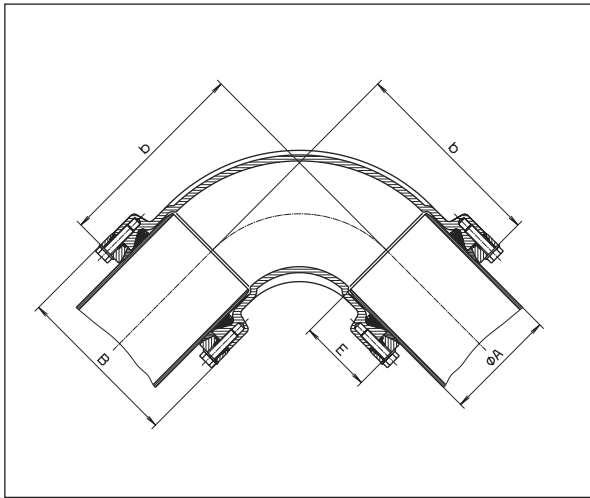
# Fittings SYSTEM 2000

## Bend

No. 8535 90°

No. 8545 45°

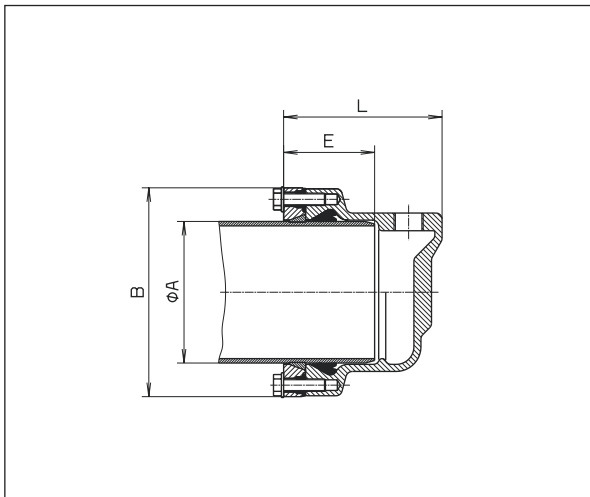
No. 8555 30°



Pipe Ø mm	b			t	B	Weight kg		
	90°	45°	30°			90°	45°	30°
63	153	112		80	124	4,2	3,7	
75	170	120		82	138	5,5	4,5	
90	188	129	115	85	152	7,1	6,4	6,0
110	213	140	122	85	172	9,2	7,5	7,3
125	240	153		87	193	11,7	9,9	
140	246	159		93	210	15,0	12,3	
160	283	181	155	105	236	19,5	16,0	16,0
180	293	191		113	258	24,0	19,5	
200	353	221		125	284	37,5	30,0	
225	355	224		128	314	43,0	39,0	
250	427	263		145	347	57,0	43,5	
280	430	266		148	376	69,0	55,0	
315	506	313		174	422	101,0	67,0	

## End Cap

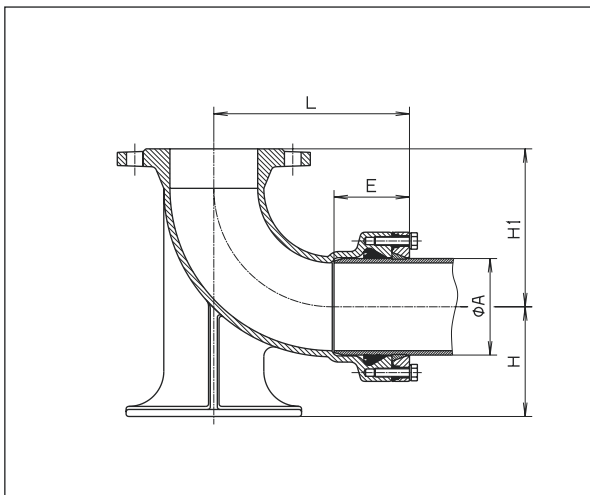
No. 8075



Pipe Ø mm	L	E	B	Weight kg
63	106	80	124	2,7
75	138	82	138	3,2
90	141	85	152	4,5
110	159	85	172	5,8
125	162	87	193	6,1
140	169	93	210	7,4
160	180	105	236	8,6
180	192	113	258	11,7
200	203	125	284	14,5
225	207	128	314	16,5
250	225	145	347	20,5
280	228	148	376	25,0
315	254	174	422	33,5

## Duck Foot Bend

No. 5045



DN	Pipe Ø mm	L	E	H	H 1	Weight kg
80	90	210	85	110	165	12,7
100	110	223	85	125	180	16,0