

| Connector | | Double Socket Tee with flanged branch | | | All Socket Tee | | |
|-----------|---|---------------------------------------|-----------|---|----------------|----------|---|
| Pipe Ø | | Pipe Ø | Flange DN | | Pipe Ø A | Pipe Ø B | |
| 63 | ● | 63 | 50 | ● | 63 | 63 | ● |
| 75 | ● | 75 | 65 | ● | 75 | 75 | ● |
| 90 | ● | 90 | 80 | ● | 90 | 90 | ● |
| 110 | ● | 110 | 50 | ● | 110 | 63 | ● |
| 125 | ● | | 80 | ● | | 90 | ● |
| 140 | ● | | 100 | ● | | 110 | ● |
| 160 | ● | 125 | 80 | ● | 125 | 90 | ● |
| 180 | ● | | 100 | ● | | 110 | ● |
| 200 | ● | | 80 | ● | | 125 | ● |
| 225 | ● | 140 | 100 | ● | 140 | 90 | ● |
| 250 | ● | | 125 | ● | | 110 | ● |
| 280 | ● | | 80 | ● | | 140 | ● |
| 315 | ● | 160 | 100 | ● | 160 | 90 | ● |
| 355 | ● | | 150 | ● | | 110 | ● |
| | | | 80 | ● | | 160 | ● |
| | | 180 | 150 | ● | 180 | 125 | ● |
| | | | 200 | ● | | 180 | ● |
| | | | 200 | ● | | 200 | ● |
| | | 225 | 80 | ● | 225 | 90 | ● |
| | | | 100 | ● | | 110 | ● |
| | | | 200 | ● | | 225 | ● |

for PE (PE 80/100) and PVC pipes up to PN 16
(DIN 8074, 8061 / 8062)

total restraint -

minimal pipe insertion force - easy to dismantle

for water and non aggressive effluent

The pipe is sealed with a lip seal.

Minimal pipe insertion force is required for pushing the pipe end into the seal chamfer with an appropriate chamfer.

The pipe restraining system is separate from the sealing system and is activated by tightening the lock ring.

For thinwalled PE-pipes (up to 3mm wall thickness) and low internal pressure we recommend using a support liner (see page D 2/4).

Assembly instructions and tensile load see "page M 6/2"

Material:

Body (1), Lock ring (5)

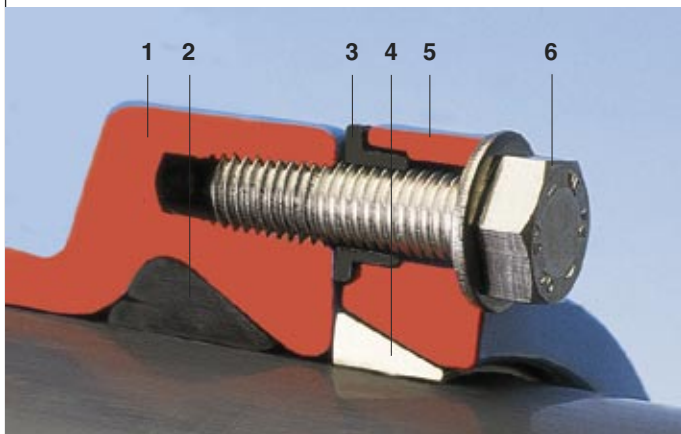
of ductile iron EN-GJS-400-18 according to EN 1563 (GGG 400 - DIN 1693), epoxy powder coated

Lip seal (2) of elastomer, suitable for potable water

Spacer bushes (3) of PE

Grip ring (4) Ms 58 (from DN 300 Rg7)

Bolts (6) A 2 (stainless)



Connector No. 0430

Chamfer the pipe (by use of a connector as a sleeve: chamfer the pipe strongly)



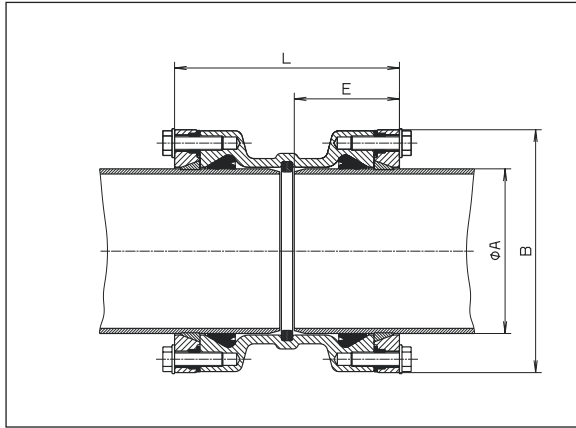
No. 8525 Double Socket Tee with flanged branch equal and reducing



No. 8515 All Socket Tee equal and reducing

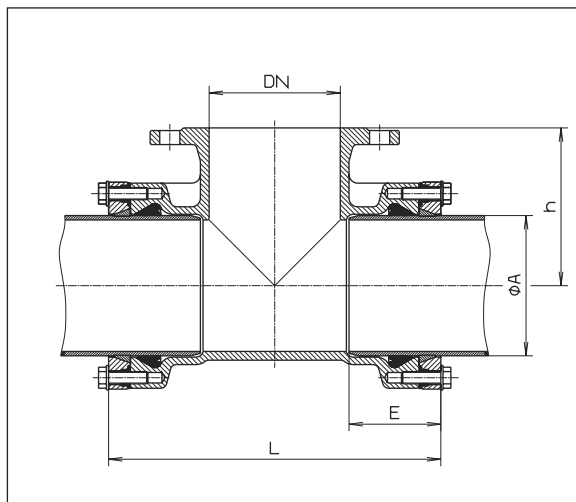


No. 0430 Connector



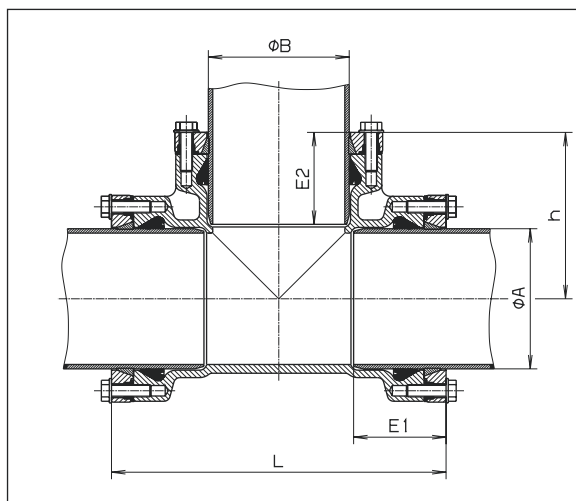
| Pipe \varnothing A mm | L | E | B | Weight kg |
|----------------------------|-----|-----|-----|--------------|
| 63 | 171 | 80 | 124 | 3,2 |
| 75 | 175 | 82 | 138 | 4,0 |
| 90 | 181 | 85 | 152 | 5,4 |
| 110 | 181 | 85 | 172 | 6,4 |
| 125 | 185 | 87 | 193 | 7,8 |
| 140 | 197 | 93 | 210 | 9,0 |
| 160 | 221 | 105 | 236 | 12,0 |
| 180 | 241 | 113 | 258 | 14,5 |
| 200 | 261 | 125 | 284 | 21,5 |
| 225 | 265 | 128 | 314 | 26,0 |
| 250 | 300 | 145 | 347 | 33,0 |
| 280 | 306 | 148 | 376 | 38,5 |
| 315 | 358 | 174 | 422 | 58,5 |
| 355 | 464 | 237 | 472 | 96,0 |

No. 8525 Double Socket Tee with flanged branch equal and reducing



| \varnothing A mm | DN | L | E | h | Weight kg |
|-----------------------|-----|-----|-----|-----|--------------|
| 63 | 50 | 236 | 83 | 100 | 8,0 |
| 75 | 65 | 250 | 85 | 110 | 9,0 |
| 90 | 80 | 268 | 85 | 140 | 11,0 |
| 110 | 50 | 240 | 85 | 150 | 10,0 |
| | 80 | 270 | 85 | 150 | 11,5 |
| 125 | 100 | 290 | 85 | 150 | 12,0 |
| | 80 | 274 | 87 | 160 | 14,0 |
| 140 | 100 | 294 | 87 | 160 | 14,0 |
| | 80 | 288 | 93 | 170 | 15,0 |
| | 125 | 334 | 93 | 170 | 16,0 |
| 160 | 80 | 300 | 105 | 180 | 16,5 |
| | 100 | 320 | 105 | 180 | 17,0 |
| | 150 | 380 | 105 | 180 | 20,0 |
| 180 | 80 | 310 | 113 | 200 | 23,0 |
| | 150 | 415 | 113 | 200 | 31,0 |
| 200 | 200 | 480 | 130 | 220 | 47,0 |
| | 80 | 356 | 130 | 220 | 33,5 |
| 225 | 100 | 376 | 130 | 220 | 33,0 |
| | 200 | 488 | 130 | 230 | 55,0 |

No. 8515 All Socket Tee equal and reducing



| \varnothing A mm | \varnothing B mm | L | E 1 | E 2 | h | Weight kg |
|-----------------------|-----------------------|-----|-----|-----|-------|--------------|
| 63 | 63 | 236 | 83 | 83 | 118 | 6,0 |
| 75 | 75 | 250 | 85 | 85 | 125 | 7,7 |
| 90 | 90 | 268 | 85 | 85 | 134 | 9,0 |
| 110 | 63 | 240 | 85 | 80 | 140 | 7,7 |
| | 90 | 270 | 85 | 85 | 145 | 8,9 |
| | 110 | 290 | 85 | 85 | 145 | 9,2 |
| 125 | 90 | 274 | 87 | 85 | 150 | 10,4 |
| | 110 | 294 | 97 | 85 | 150 | 10,7 |
| | 125 | 306 | 90 | 90 | 153 | 15,0 |
| 140 | 90 | 288 | 93 | 85 | 157,5 | 12,2 |
| | 110 | 305 | 93 | 85 | 160 | 12,5 |
| | 140 | 344 | 96 | 96 | 167 | 19,0 |
| 160 | 90 | 310 | 105 | 85 | 170 | 14,0 |
| | 110 | 330 | 105 | 85 | 170 | 14,5 |
| | 160 | 380 | 105 | 105 | 190 | 16,5 |
| 180 | 125 | 360 | 113 | 87 | 180 | 24,0 |
| | 180 | 415 | 113 | 113 | 207,5 | 29,0 |
| 200 | 200 | 460 | 128 | 128 | 230 | 35,0 |
| | 90 | 356 | 128 | 85 | 200 | 29,5 |
| 225 | 110 | 376 | 128 | 128 | 200 | 30,0 |
| | 225 | 488 | 130 | 130 | 244 | 55,0 |