

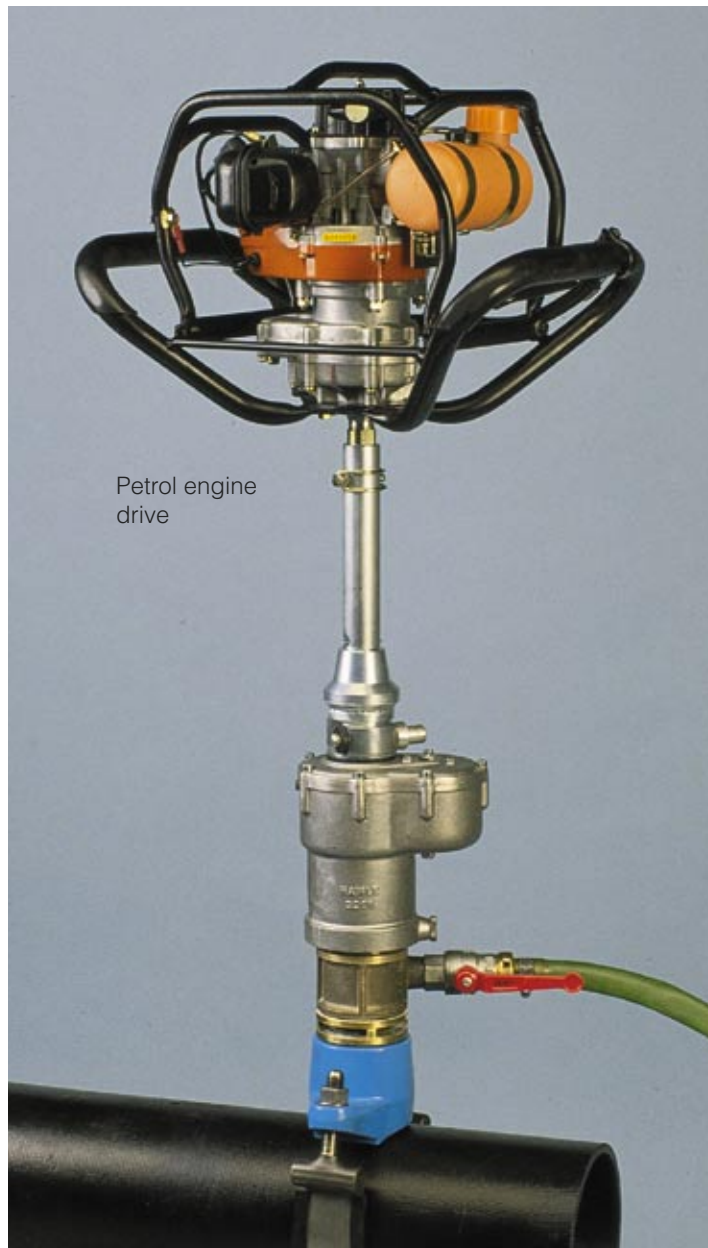
One Powered Drilling Machine with

Three Options

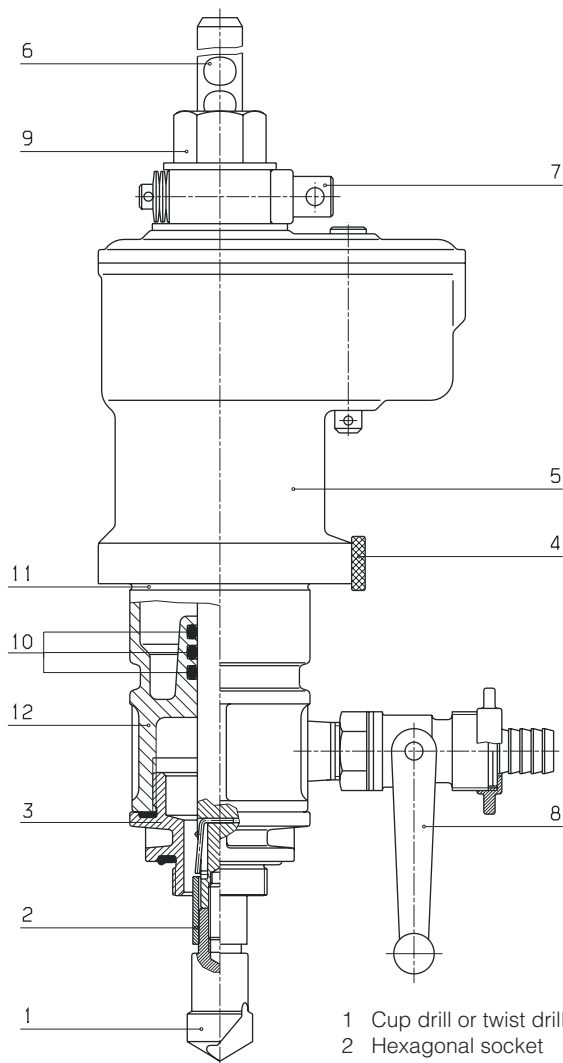
- hand ratchet
- petrol engine
- pneumatic

- Also for under pressure drilling
- For quick and simple drilling of CI, steel, AC and plastic pipes
- Motorised power and continuous feed are necessary for driving the special carbide drills which are needed for cement lined cast iron pipes.

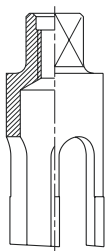
No. 5805	Machine with handratchet Standard version (in metal case)	●
No. 5835	Petrol engine including Adaptor for drilling machine No. 5805	●
No. 5836	Pneumatic including Adaptor (air consumption: 540 l/min) for drilling machine No. 5805	●



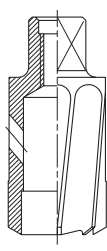
Motorised Drilling Machine



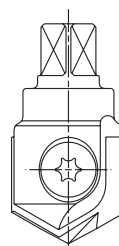
- 1 Cup drill or twist drill
- 2 Hexagonal socket
- 3 Adaptor or reducer
- 4 Knurled nut
- 5 Gear transmission
- 6 Shaft
- 7 Shaft locking bolt
- 8 Ball valve (washout)
- 9 Carrier
- 10 O ring
- 11 Red marking
- 12 Body



No. 5860
Cup drill
for PVC pipes



No. 5870
Cup drill
for steel and CI pipes



No. 5855W
Carbide drill

Continuous feed and motorised drive are required

Special equipment:

for cast iron, cement lined cast iron, and AC pipes

No. 5805W **complete in case**

same as No. 5805, but instead of twist drill No. 5850 with carbide drill No. 5855

No. 5825 Drilling Machine

No. 5815 Case

No. 5830 Ratchet

No. 5840 Shaft

No. 5845 Short Shaft

Twist drill for steel, CI and AC pipes

Twist drill 1" - 24 Ø

No. 5850 Twist drill 1¼" - 29 Ø

Twist drill 1½" - 35 Ø

Twist drill 2" - 40 Ø

Cup drill for PVC pipes

Cup drill 1" - 24 Ø

No. 5860 Cup drill 1¼" - 29 Ø

Cup drill 1½" - 35 Ø

Cup drill 2" - 40 Ø

Reducing adaptor with rubber seals

2" - 1"

No. 5890 2" - 1¼"

2" - 1½"

2" - 2½"

Equal adaptor with rubber seals

No. 5900 2" - 2"

No. 5920 2 pcs. C spanner for adaptor

Saddle blade for shut off

No. 8401 1" - 1¼"

1½" - 2"

No. 5805 Complete in case Weight: 22,5 kg

Alternative to twist drill No. 5850

Cup drill for steel and CI pipes

Cup drill 1" - 24 Ø

No. 5870 Cup drill 1¼" - 29 Ø

Cup drill 1½" - 35 Ø

Cup drill 2" - 40 Ø

No. 5940 Adaptor 2" - 1½"
for ISO Combination Tapping Valve (Page C 4/3)