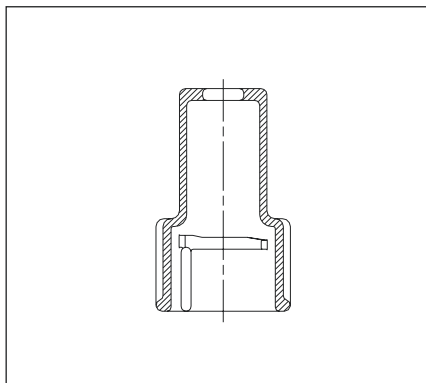


## No. 9640

### Protective Cover

for extension spindles with bayonet connection (old version of service valves)

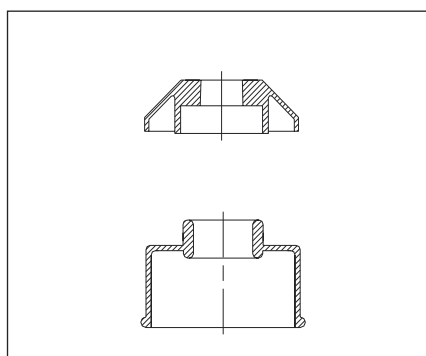


Weight kg	
0,08	●

## No. 9651

### Sealing cap

for all rigid type extension spindles



DN	No. 9650	No. 9651
3/4" - 2"	●	●
50 - 200	●	●
250 - 600	●	●

## No. 9650

### Cap

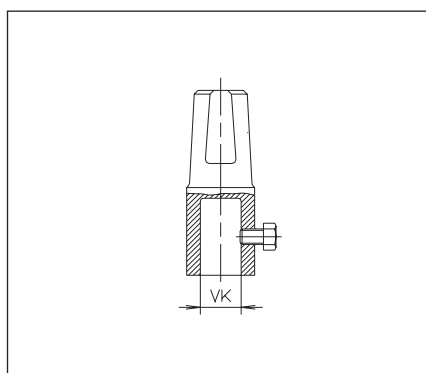
for all rigid type extension spindles

## No. 8670

### Spindle Head

for rigid extension spindles for Elypso Valves

of ductile iron  
with set bolt



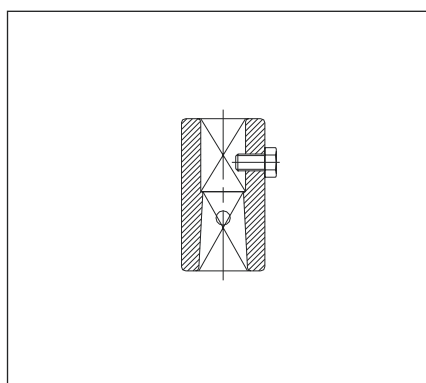
DN	Square head dimension	Weight kg	
50 - 200	20,5	0,65	●
250 - 600	25,5	0,68	●

## No. 8660

### Spindle Coupling

for all extension spindles

of ductile iron  
with set bolt



DN	Weight kg	
3/4" - 2"	0,15	●
50	0,30	●
65	0,30	●
80	0,40	●
100 - 150	0,40	●
200	0,60	●
250 - 350	0,80	●
400 - 500	0,80	●
500 - 600	1,44	●

# Spare Parts

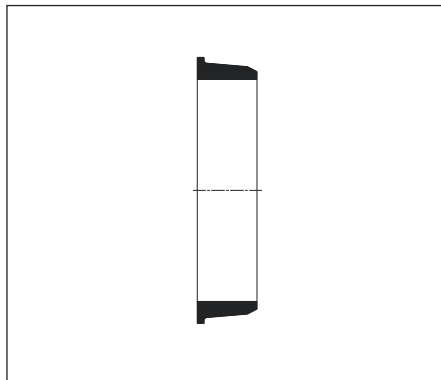
## No. 7500

### Sleeve Gasket

for Spar Flange

No. 0101, 0102, 1001, 1002

Please specify type of pipe and outside diameter



DN	Weight kg	
50	0,07	●
60	0,11	●
65	0,11	●
80	0,14	●
100	0,18	●
125	0,23	●
150	0,30	●
200	0,50	●
250	0,60	●
300	0,90	●
400	1,70	●

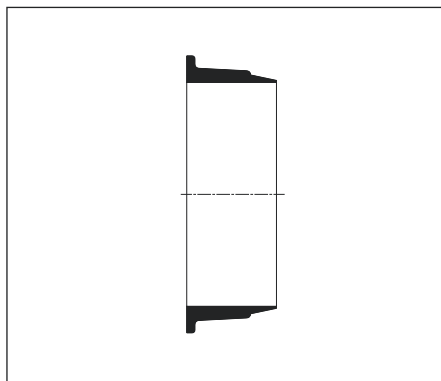
## No. 7510

### Sleeve Gasket

for Double Chamber Flange Adaptor

No. 7101, 7102, 7103, 7402

Please specify type of pipe and outside diameter



DN	Weight kg	
40	0,07	●
50	0,09	●
65	0,14	●
80	0,17	●
100	0,26	●
125	0,30	●
150	0,40	●
200	0,60	●
250	0,85	●
300	1,20	●
400	2,20	●

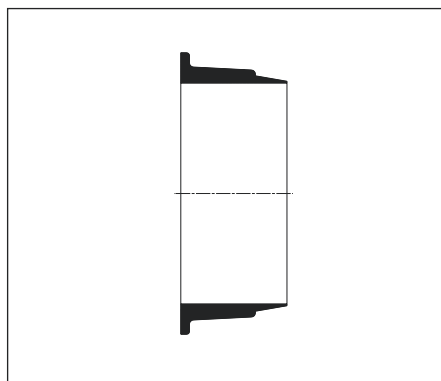
## No. 7524

### Sleeve Gasket

for Double Chamber Flange Adaptor

No. 5600, 5630 (PVC)

Please specify outside diameter of pipe



DN	Pipe Ø mm	Weight kg	
50	63	0,10	●
65	75	0,13	●
80	90	0,17	●
100	110	0,20	●
150	160	0,40	●
200	200	0,70	●
200	225	0,85	●
250	250	1,30	●
250	280	1,30	●
300	315	1,50	●
400	400	2,80	●

## No. 7532

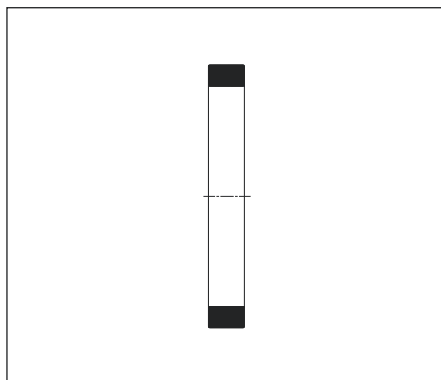
### Sleeve Gasket

for Flange Adaptor, restraint

No. 7602 (cast iron)

Please specify outside diameter of pipe

The gasket has grip ring segments glued to it



DN	Pipe Ø mm	Weight kg	
50	66	0,14	●
60	77	0,14	●
65	82	0,16	●
80	98	0,25	●
100	118	0,30	●
125	144	0,40	●
150	170	0,70	●
200	222	1,30	●
250	274	1,70	●
300	326	2,00	●