

stainless steel

all metallic parts - chromium-nickel-steel

fully encircling elastomer gasket seals complete gaps and other pipe damage

Application: water up to 110° C, other applications on request

The clamp with the self-centering lug system

The short bolts (3) are welded to the bolt bar (4). The handle makes for easy assembly onto the pipe. The nuts are fed directly to the bolts from a special nut dispenser (8). This eases the positioning of lugs and bolts, and avoids handling of loose parts.

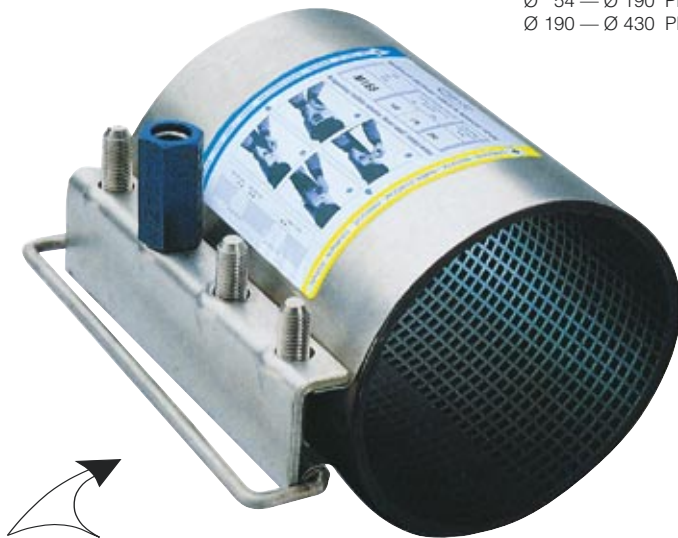
Pipe repair clamps cannot be used for restraint connections.

Special version such as larger diameters and other lengths on request.

for steel, DCI, AC and PVC pipes

No. 0750

tested under normal conditions:
 Ø 54 — Ø 190 PN 16
 Ø 190 — Ø 430 PN 10



The quick assembly system with the easy to use handle and nut dispenser

No. 0750 „single lug”

for pipe outside diameters of 54 - 430 mm
 length 150 - 380 mm

No. 0751 „double lug”

for pipe outside diameter of 87 - 471 mm
 length 200 - 380 mm

The advantage of the double lug is that each clamp covers a bigger diameter range.

This system enables larger diameter clamps to be manufactured more quickly.

Clamps of over 400 mm are sometimes made with more than 2 lugs.

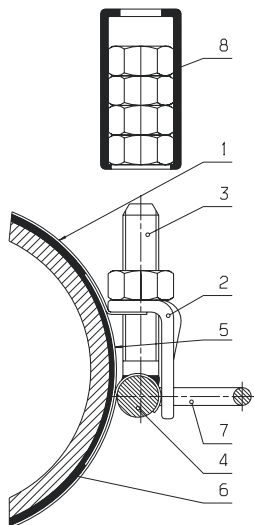
No. 0751

tested under normal conditions:
 Ø 87 — Ø 186 PN 16
 Ø 208 — Ø 430 PN 10
 Ø 425 — Ø 471 PN 6



No. 0750/0751

1. Band
1.4571
2. Lug
1.4301
3. Bolts
A 2 1.4301
4. Bolt-bar
1.4301
5. Bridging plate
1.4301
6. Gasket
Elastomer
7. Handle
1.4301
8. Nut dispenser
Elastomer



No. 0501

„light weight model”

not suitable for plastic pipes

Application: water up to 70° C

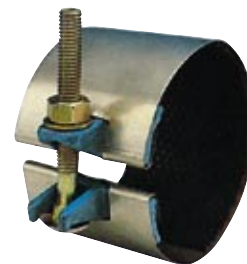
for Pipe diameter of
 21 — 64 mm, length 76 mm

Band: stainless steel 1.4301

Gasket: Elastomer

Lug: malleable iron

Bolts: electro galvanized, imperial threads



Pipe Repair and Coupling Clamp

Order no. 0750 single lug

Type	Pipe Ø mm	Length mm	suitable for pipe DN						Weight kg				
			Steel	DI	AC-PN 10		AC-PN 16				PVC		
					raw	machined	raw	machined				OD	
K 54	54-58	150	50						1,1	●			
M 54		200							1,5	●			
K 58	58-64	150	50						1,1	●			
M 58		200						63	1,5	●			
K 63	63-68	150	50						1,2	●			
M 63		200						63	1,6	●			
K 68	68-76	150		50	50				1,2	●			
M 68		200									1,7	●	
K 75	75-83	150	65	60	60				1,3	●			
M 75		200								75	1,7	●	
K 82	82-91	150	80	65					1,3	●			
M 82		200							90	1,8	●		
K 95	95-104	150	80	80	80	80			1,4	●			
M 95		200										1,9	●
K 104	104-112	150	100				80	80	110	1,5	●		
M 104		200									2,0	●	
K 112	112-121	150	100	100	100				1,5	●			
M 112		200									2,1	●	
K 115	115-125	150	100	100	100				1,5	●			
M 115		200								125	2,1	●	
K 120	120-130	150		100	100	100	125		1,7	●			
M 120		200											2,2
K 131	131-141	200	125				100		140	3,2	●		
M 131		250							4,0	●			
K 140	140-150	200	125	125						3,2	●		
M 140		250								4,0	●		
L 140		315								5,2	●		
K 151		200								3,4	●		
M 151	151-161	250	150	125	125	160			4,3	●			
L 151		315										5,4	●
K 166	166-178	200	150	150	150				3,5	●			
M 166		250									4,4	●	
L 166		315									5,5	●	
K 178		200									3,6	●	
M 178	178-190	250	150	150	150	180			4,5	●			
L 178		315										5,7	●
K 190	190-202	200		150	150	200			3,9	●			
M 190		250										4,7	●
L 190		315										5,8	●
K 200	200-212	250	200						5,0	●			
M 200		315							6,2	●			
L 200		380							7,5	●			
K 215		250							5,0	●			
M 215	215-227	315	200	200					6,3	●			
L 215		380								7,6	●		
K 233	233-246	250		200	200				5,2	●			
M 233		315									6,3	●	
L 233		380									7,8	●	
K 250	250-262	250		200	200	250			5,4	●			
M 250		315										6,8	●
L 250		380										8,1	●
K 269		250										5,6	●
M 269	269-281	315	250	250					7,1	●			
L 269		380								8,5	●		
K 285	285-297	250		250	250				6,0	●			
M 285		315									7,5	●	
L 285		380									9,0	●	
K 306		250									6,0	●	
M 306	306-318	315		250	250	315			7,8	●			
L 306		380										9,2	●
K 315	315-327	250	300	300					6,2	●			
M 315		315								7,8	●		
L 315		380								9,5	●		
K 345	345-357	250	350	300	300	355			6,7	●			
M 345		315										8,3	●
L 345		380										10,0	●
K 366	366-379	250	350	350	300	300			7,0	●			
M 366		315										8,7	●
L 366		380										10,5	●
K 400	400-412	250	400	350	350	400			7,4	●			
M 400		315										9,2	●
L 400		380										10,9	●
K 418		250										7,6	●
M 418	418-430	315	400	400					9,7	●			
L 418		380								11,8	●		

Order no. 0751 double lug

Type	Pipe Ø mm	Length mm	suitable for pipe DN						Weight kg		
			Steel	DI	AC-PN 10		AC-PN 16				PVC
					raw	machined	raw	machined			
M 87	87-102	200	80	80	80	80			90	2,7	●
M 106	106-124	200	100	100	100	100	80		110	2,8	●
M 114	114-132	200	125	100	100	100		100	125	2,9	●
K 132	132-152	200	125	125	125	125	100		140	4,9	●
M 132		250								6,2	●
K 142	142-162	200	150	125	125	125	125	160	5,0	●	
M 142		250							6,4	●	
K 160	160-180	200	150	150	150	160	160	5,3	●		
M 160		250						6,5	●		
L 160		315						8,1	●		
K 166	166-186	200	150	150	150	150	160	5,3	●		
M 166		250						6,7	●		
L 166		315						8,3	●		
K 208	208-230	250	200	200	200	200	225	7,2	●		
M 208		315						8,8	●		
L 208		380						10,7	●		
K 220	220-242	250	200	200	200	200	225	7,3	●		
M 220		315						9,0	●		
L 220		380						11,1	●		
K 236	236-258	250	200	200	200	200	250	7,5	●		
M 236		315						9,4	●		
L 236		380						11,1	●		
K 271	271-293	250	250	250	250	250	280	7,8	●		
M 271		315						9,9	●		
L 271		380						11,8	●		
K 306	306-328	250	300	300	250	250	315	8,4	●		
M 306		315						10,0	●		
L 306		380						12,0	●		
K 330	330-352	250	300	300	300	300	355	8,9	●		
M 330		315						10,7	●		
L 330		380						13,1	●		
K 346	346-368	250	350	300	300	300	355	8,9	●		
M 346		315						11,0	●		
L 346		380						13,3	●		
K 369	369-392	250	350	300	300	300	355	9,1	●		
M 369		315						11,2	●		
L 369		380						13,8	●		
K 406	406-430	250	400	400	350	350	450	9,7	●		
M 406		315						11,7	●		
L 406		380						14,5	●		
K 425	425-448	250	400	350	350	350	450	9,8	●		
M 425		315						12,3	●		
L 425		380						14,8	●		
K 448	448-471	250	400	400	400	400	450	10,2	●		
M 448		315						12,8	●		
L 448		380						15,1	●		

Order no. 0501

Type	Pipe Ø mm	Length	Weight kg	
D 21	21-25	76	0,25	●
D 26	26-30	76	0,30	●
D 33	33-37	76	0,35	●
D 42	42-45	76	0,35	●
D 48	48-51	76	0,45	●
D 50	50-54	76	0,45	●
D 60	60-64	76	0,45	●

Illustrations, technical data, dimensions and weights are subject to alteration without notice.

4. 2004