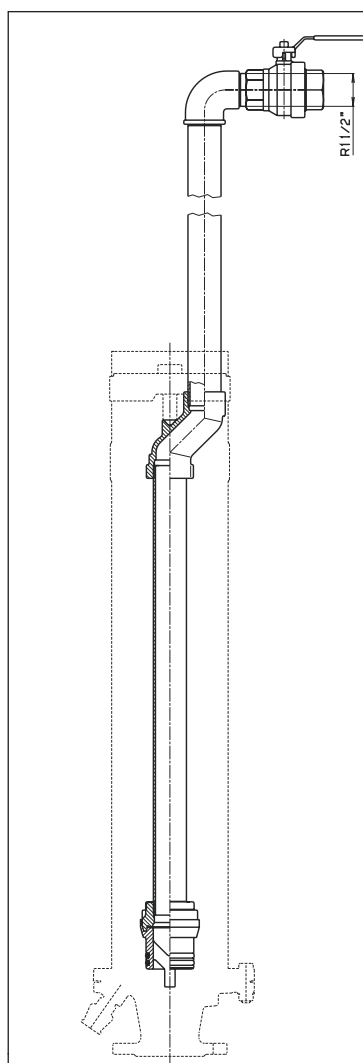


Order no.	Working pressure	DN	Installation depth		L= total length*	Weight kg	
			above-ground (fig. 1)	below-ground (fig. 2)			
9822	PN 1 - PN 16	50	0,75 m	1,00 m	755	23,0	●
			1,00 m	1,25 m	1055	27,0	●
			1,25, m	1,50 m	1305	30,0	●
			1,50 m		1555	33,0	●
		80	0,75 m	1,00 m	755	24,0	●
			1,00 m	1,25 m	1055	28,0	●
			1,25, m	1,50 m	1305	31,0	●
			1,50 m		1555	34,0	●
9823	PN 0,1 - PN 6	50	0,75 m	1,00 m	755	23,0	●
			1,00 m	1,25 m	1055	27,0	●
			1,25, m	1,50 m	1305	30,0	●
			1,50 m		1555	33,0	●
		80	0,75 m	1,00 m	755	24,0	●
			1,00 m	1,25 m	1055	28,0	●
			1,25, m	1,50 m	1305	31,0	●
			1,50 m		1555	34,0	●

**Air valve for releasing air only:
(with air inflow stop) on request**
(see over page figure 3)



*Length= reducible 100 mm minimum Length= 650 mm
maximum Length= 2500 mm

This arrangement eliminates expensive valve chambers.

The stainless steel stand pipe protects the automatic air valve.

An automatic shut-off valve enables the equipment easily to be removed for inspection and reinstalled under pressure.

The materials from which the valve is made, namely POM and bronze assure complete corrosion resistance.

Excess water is drained away through an ISO-Pipe-Fitting DN 1/2".

For below-ground installation a surface box with minimum opening of 300 mm diameter is required.

Gravel backfilling should be used to prevent rain water from accumulating in the surface box (see figure 2, page E 2/2)

The air release valve can be shortened by 100 mm by cutting the standpipe 5 and extension tube 3 at the red marks (see over page).

Max. air release capacity: 3,2 m³/min

Inlet flange: DN 50 or DN 80
drilled to DIN 2501

Air valve for releasing air only: on request
(minimum pressure required: 0,3 bar)

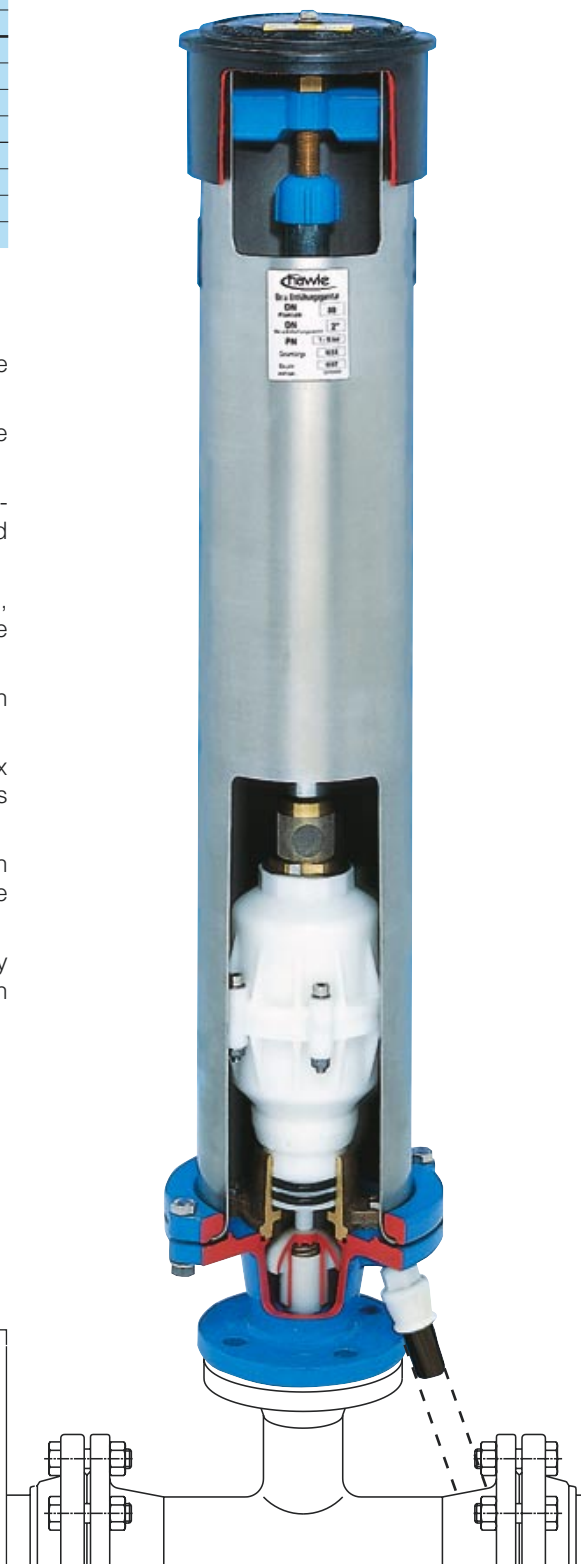
Flushing Stand Pipe

including shut-off valve

Instead of the air valve assembly a stand pipe can be supplied for water main flushing and for water discharge generally.

Order no.	L	Weight kg	
9824	755	4,70	●
	1055	5,80	●
	1305	6,75	●
	1555	7,60	●

L= Total length of the hydrant



Combined Air Release Valve

fig. 1

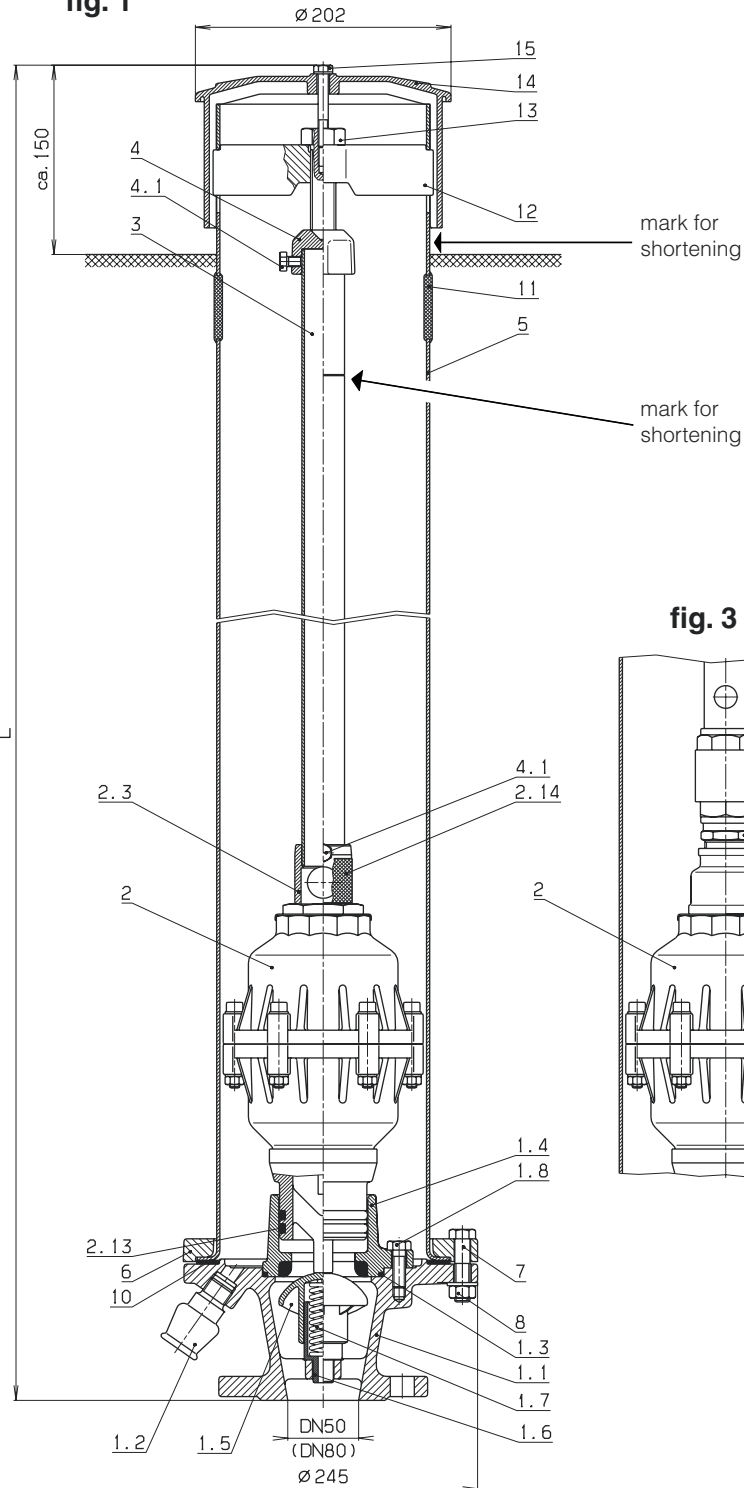
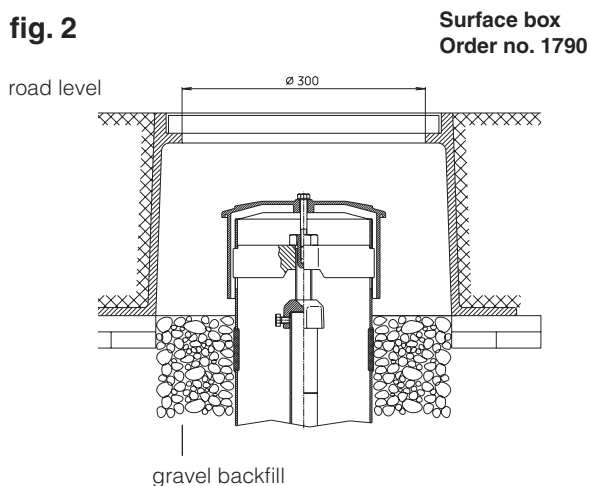
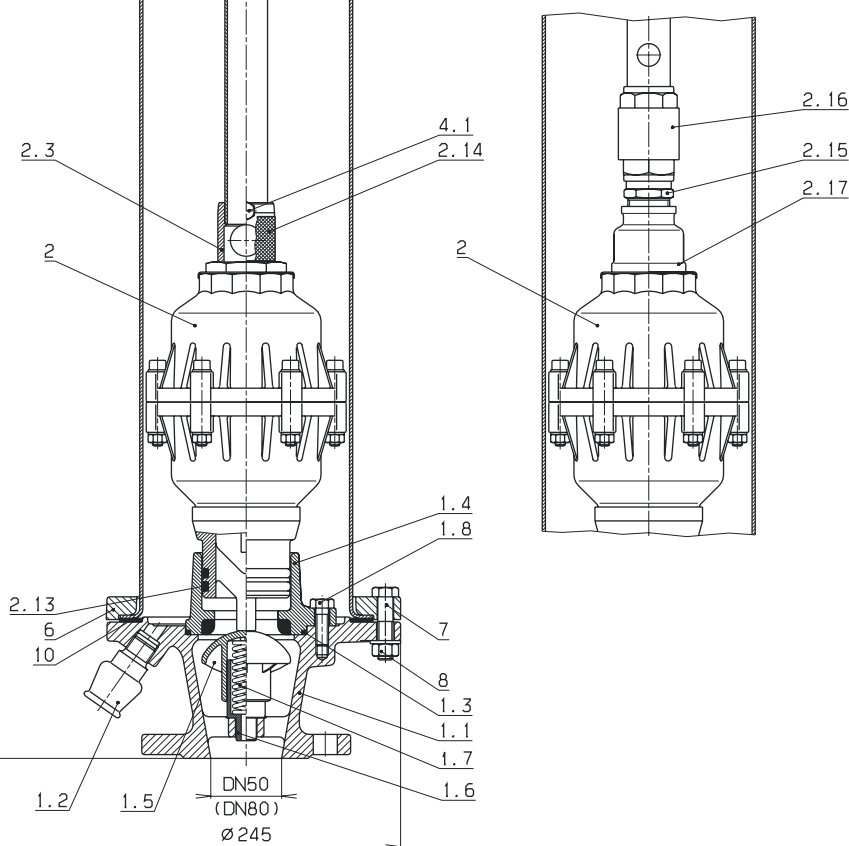


fig. 2



Surface box
Order no. 1790

fig. 3



Parts	Material
1.1 inlet flange	EN-GJS (GGG)
1.2 drain-off fitting	EN-GJS (GGG)
1.3 O ring	elastomer
1.4 foot valve flange	Ms
1.5 foot valve	POM
1.6 spring case	POM
1.7 spring	A2
1.8 hexagon bolt M 10 DIN 934	A2
2 air valve	see page E 1/2
2.3 air outlet	Ms/elastomer
2.13 O ring	elastomer
2.14 insect protective grid	A2
2.15 double nipple	Ms
2.16 non return valve Europa	Ms
2.17 reducing socket	Ms
3 tube, galvanized	A2
4 coupling	EN-GJS (GGG)
4.1 hexagon bolt DIN 933	A2
5 stand pipe	A4
6 lock ring	EN-GJS (GGG)
7 hexagon bolt M 12 x 50 DIN 931	A2
8 hexagon nut DIN 934	A2
10 seal	elastomer
11 blind cover	elastomer
12 spindle support	EN-GJS (GGG)
13 operating bolt	A2
14 hood	HDPE
15 hexagon bolt DIN 933	A2

Removal:

- unscrew the bolts (15)
- take off the hood (14)
- Undo bolt (13), until spindle support (12) disconnects from standpipe (5)

- the foot valve will close (1.5)
- lift off the air valve assembly with the extension tube (3)

Installation:

reverse the above instructions