

Order no.	DN	Version	Application	Working pressure bar	
9876	1"	standard	for cold water	PN 0,1 - PN 6	●
				PN 0,8 - PN 16	●
9876	2"	standard	for cold water	PN 0,1 - PN 6	●
				PN 1 - PN 16	●
9874	2"	with flange DN 50 (ductile iron)	for cold water	PN 0,1 - PN 6	●
				PN 1 - PN 16	●

Air valve for releasing air only: on request
(minimum pressure required: 0,3 bar)

The female thread inlet is reinforced with a stainless steel ring

Installation: upright, preferably at the highest point in the pipeline with isolating valves.

PE shield for UV protection

No. 9876
DN 1"



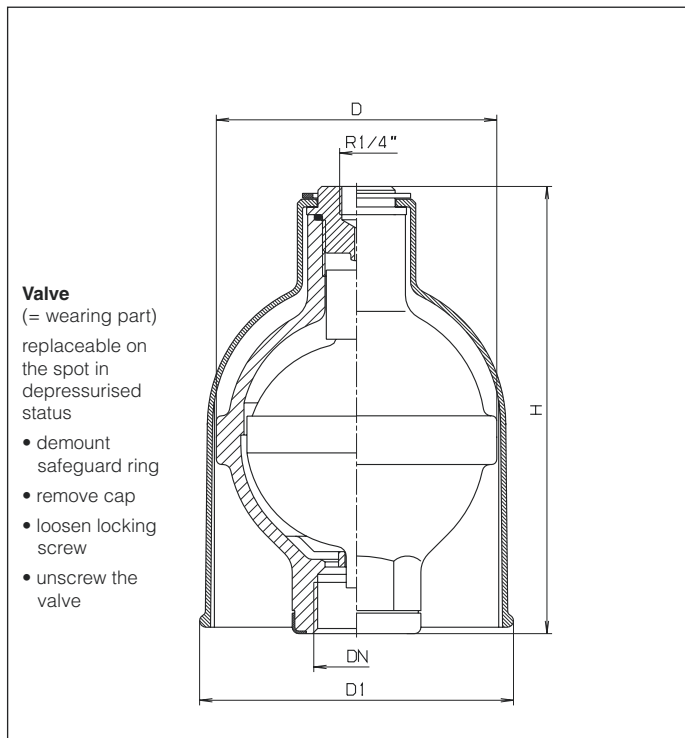
No. 9874
DN 2"



No. 9876
DN 2"



Automatic Air Valve



DN 1" for small air discharge

Max.

Air release capacity:

0,13 m³/min.

Test pressure:

Body 24 bar

Working pressure:

0,1 — 6 bar

0,8 — 16 bar

Material:

Body: POM

Orifice and valve plug: CuAl10

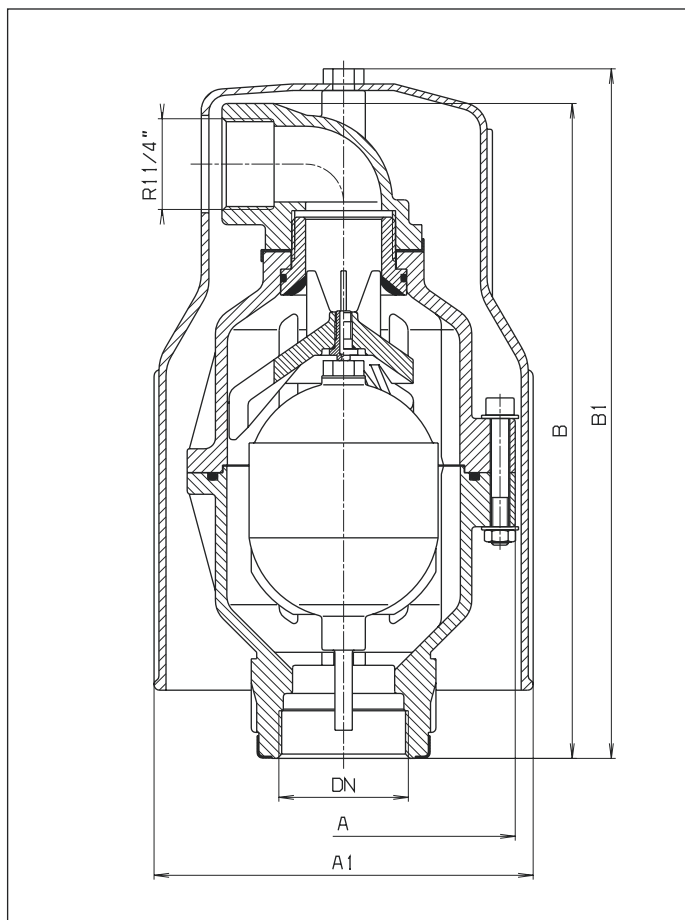
Float: POM

Seal: elastomer

UV shield: PE

Please specify working pressure

DN	PN	Working pressure	Size of the opening	Ø D	Ø D 1	H	Weight kg
1"	6	0,1 - 6	1,77 mm ²	109	122	172	0,90
1"	16	0,8 - 16	1,77 mm ²	109	122	172	0,90



DN 2"

Max.

Air release capacity:

3,2 m³/min.

Test pressure:

Body 24 bar

Working pressure:

0,1 — 6 bar

1 — 16 bar

Material:

Body and outlet elbow: POM

Valve seat: CuZn35Pb3As

Float: POM

Seal: elastomer

UV shield: PE

Please specify working pressure

DN	PN	Working pressure	Size of the opening	Ø A	Ø A 1	B	B 1	Weight kg
2"	6	0,1 - 6	900/2,0 mm ²	160	175	305	320	2,80
2"	16	1 - 16	900/2,0 mm ²	160	175	305	320	2,80