

with separate removable mounting ring for road surfaces which have to be milled down

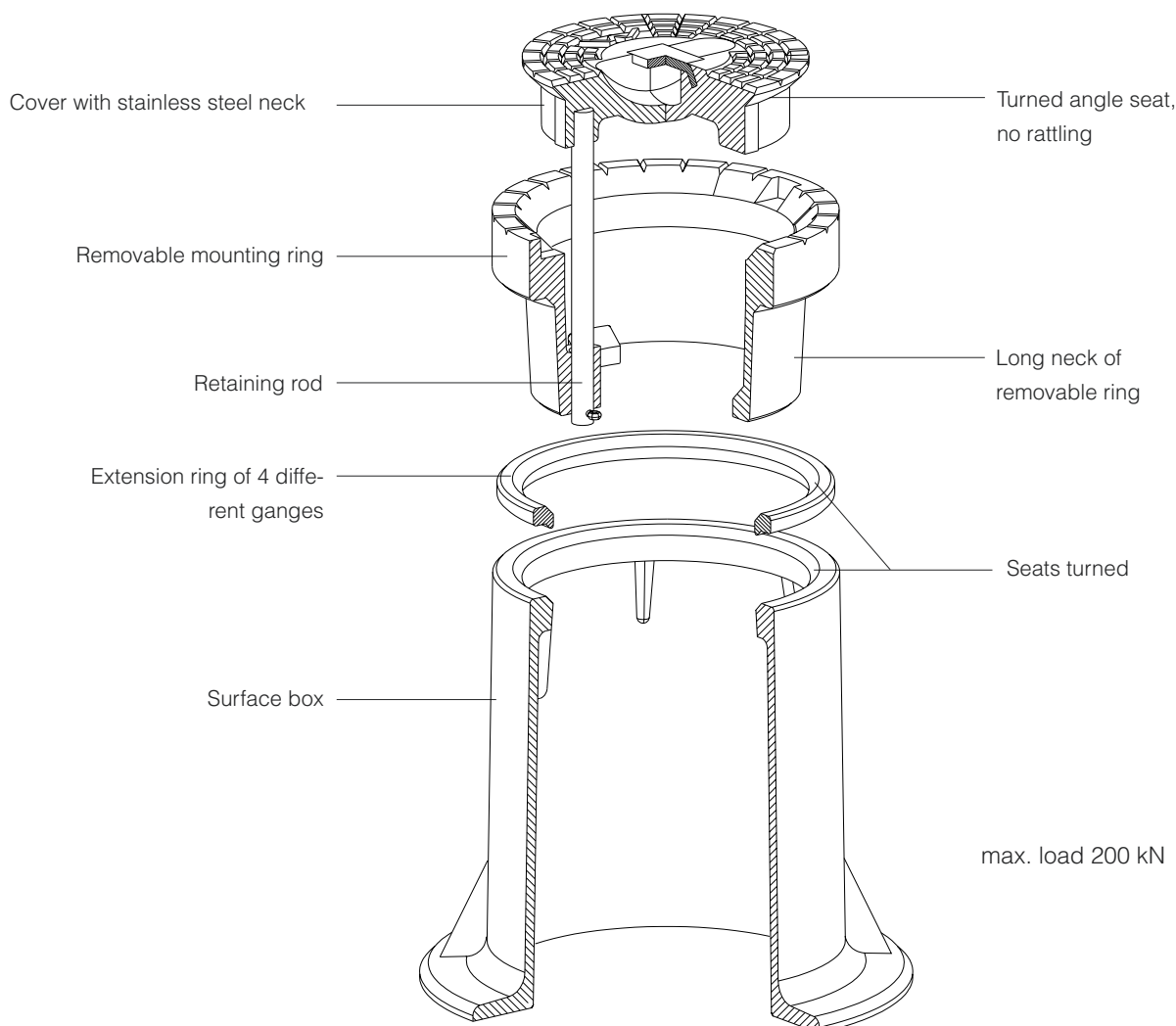
## Surface Boxes

Order no.	Version	Weight kg	
<b>2051</b>	DIN 4056 (gate valves)	21,5	●
<b>1851</b>	DIN 4057 (service valves)	11,0	●

## Surface Boxes

Order no.	suitable for	Height mm			
		10	20	30	50
<b>2045</b>	Surface Box No. 2051	●	●	●	●
		0,5 kg	1,1 kg	1,6 kg	3,0 kg
<b>2035</b>	Surface Box No. 1851	●	●	●	●
		0,4 kg	0,8 kg	1,2 kg	2,0 kg

Accessories: Puller No. 5971 (see illustration 1)

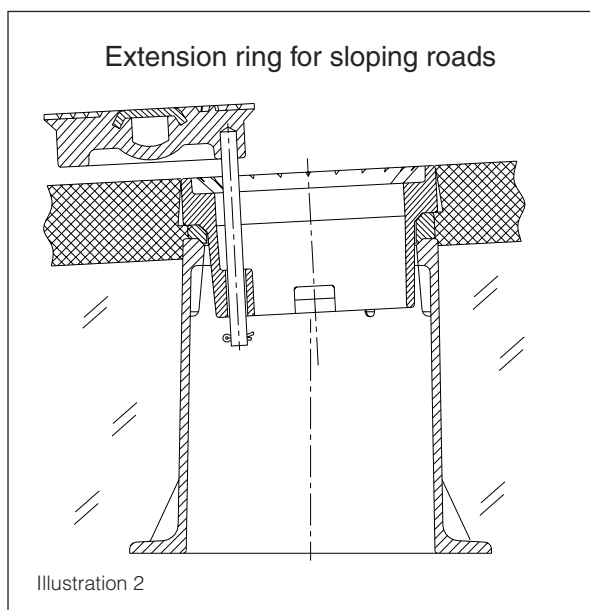
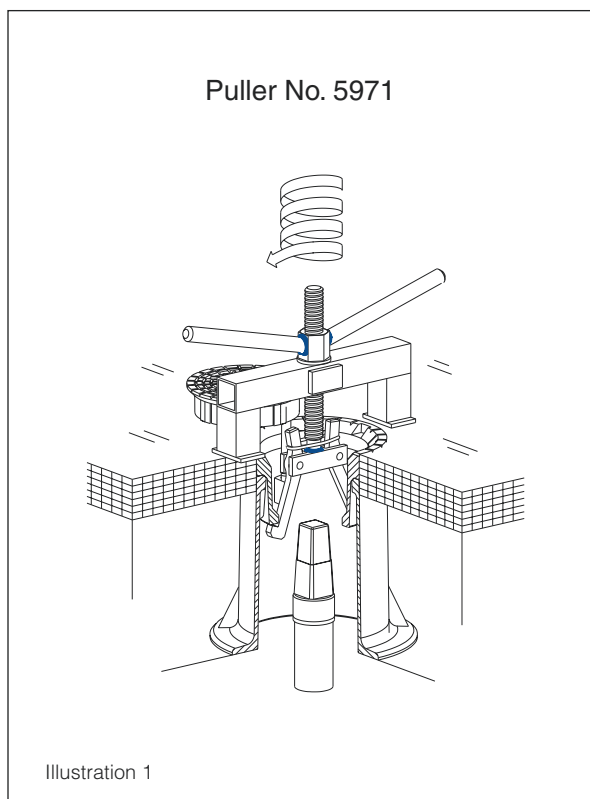
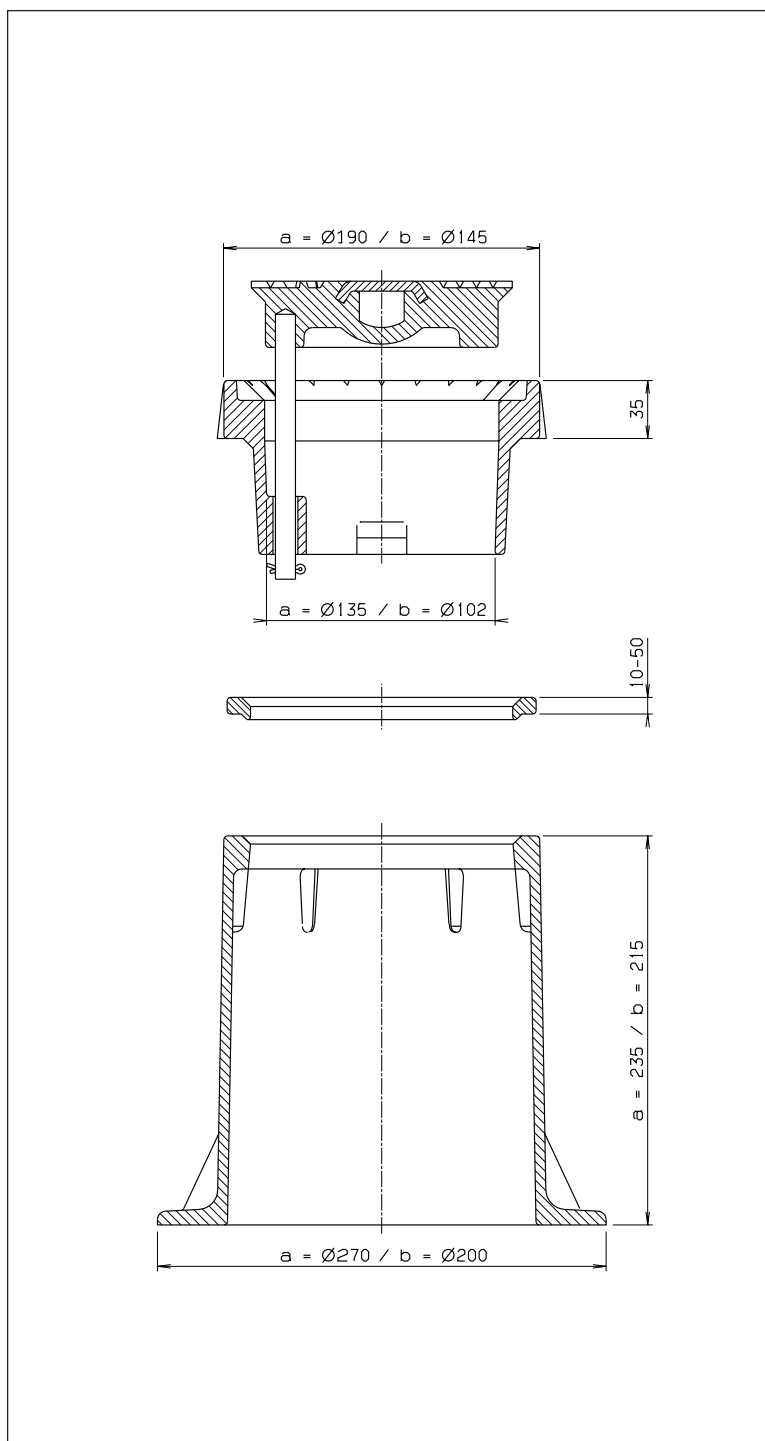


### Advantages:

- Proven angle seat prevents the cover from rattling.
- **High quality corrosion protection** using the GSK fluidised bed Epoxy coating system.
- The removable mounting ring enables a milling down of the road surface without removing the surface box.
- **Height adjustable** with extension rings.
- **Cover secured** by stainless steel retaining rod.
- Available on request: special wedged extension ring for sloping roads (see illustration 2).

# Height adjustable Surface Box to DIN

Dimensions for Surface Box to DIN    a = DIN 4056    b = DIN 4057



**Material:** - box of grey iron, epoxy powder coating in accordance with GSK

- retaining rod and cover neck of stainless steel

Angle seats are turned!