

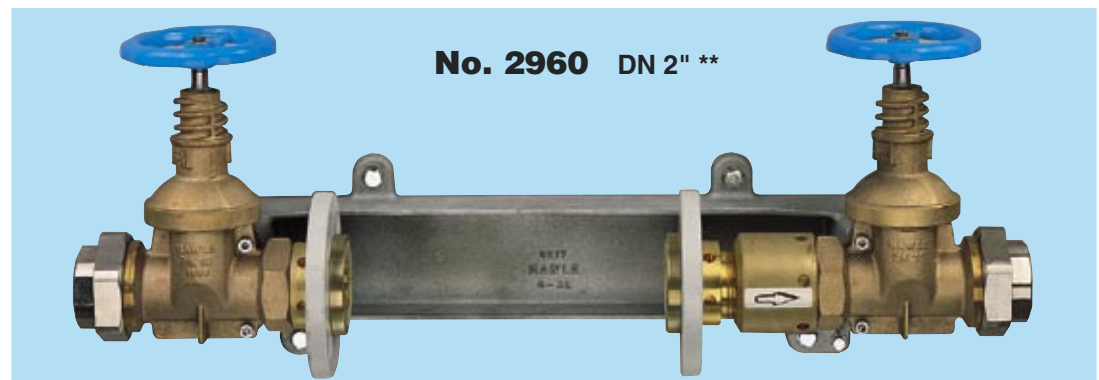
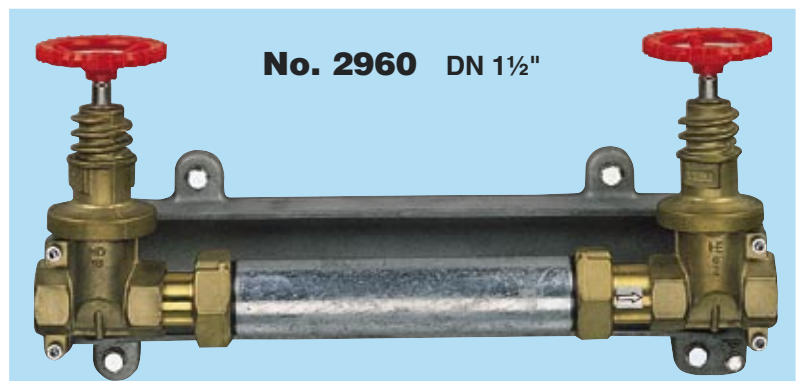
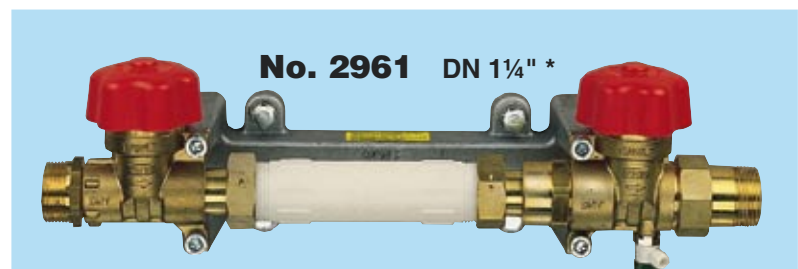
Order no.	DN	Valve connection	k_v value m ³ /h bei 1 bar Δp	for water meter ÖNORM B 2535 DIN-ISO 4064	
2961	1"	2 female threads G 1 ISO 228	11,4	3(5) m ³ /h - 7(10) m ³ /h	●
	1¼"*	2 male threads R 1¼" DIN 2999	11,4	3(5) m ³ /h - 7(10) m ³ /h	●
2960	1½"	2 female threads G 1½ ISO 228	32,1	20 m ³ /h	●
	2" **	2 female threads G 2 ISO 228	47,2	30 m ³ /h	●

for cold water up to 30° C - PN 16

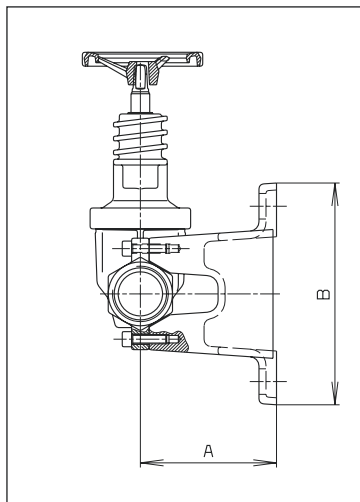
Special versions: * DN 1¼" with female thread G 1¼ ISO 228
** DN 2" without meter substitution connector

Design features:

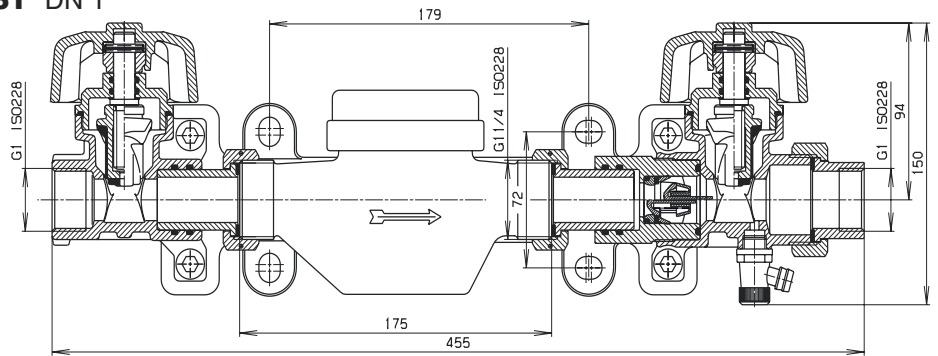
- compact design - with integral back flow preventer
- problem-free assembly and dismantling of the water meter by length adjustment (supplied without water meter)
- body of brass, wall plate of aluminium (including fastening set for water meter console)
- electrical earthing link to base plate
- Order no. 2961 with drainage plug
- DN 1", 1¼" and 1½" supplied with meter substitution connector



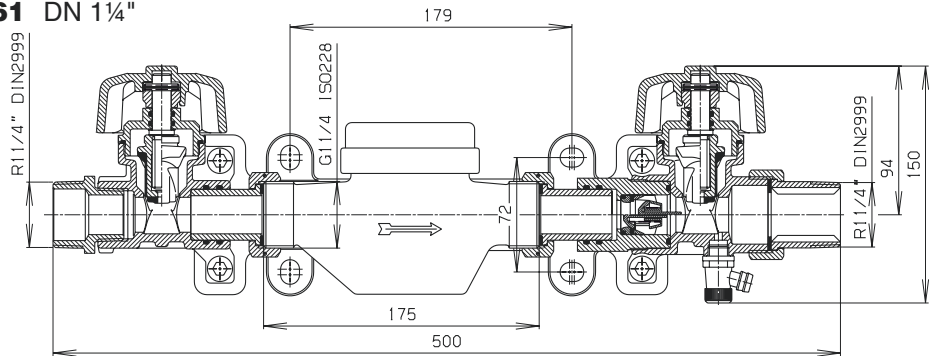
Water Meter Console



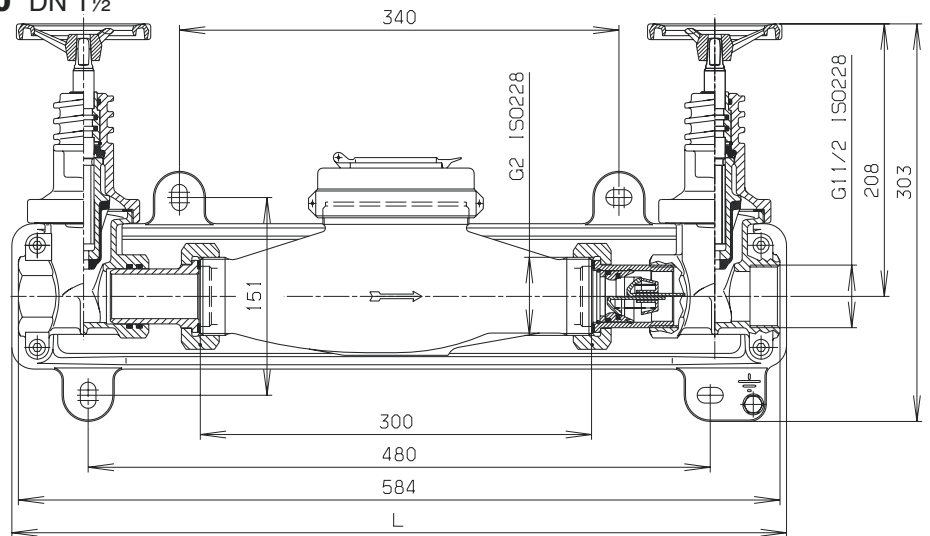
No. 2961 DN 1"



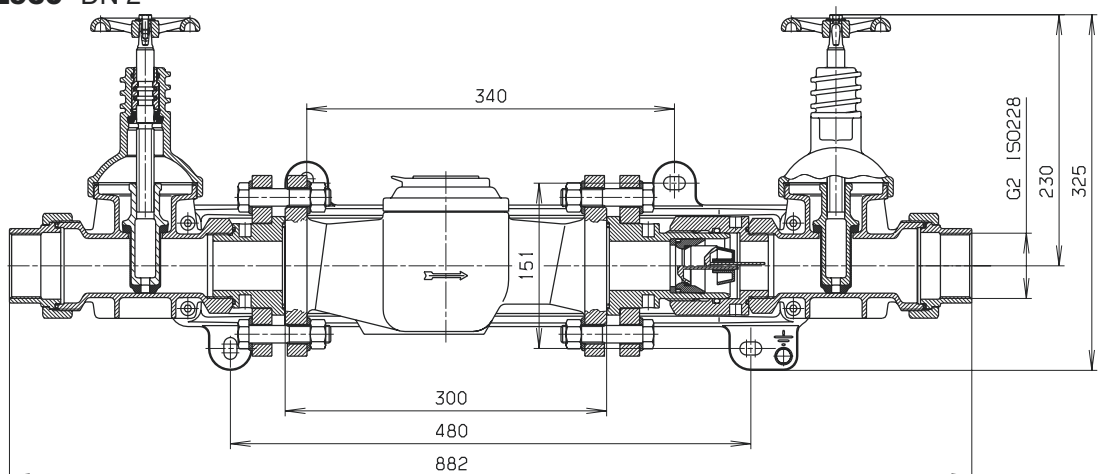
No. 2961 DN 1 1/4"



No. 2960 DN 1 1/2"



No. 2960 DN 2"



DN	Meter connection	A mm	Weight kg
1"	1 1/4"	90	4,40
1 1/4"	1 1/4"	90	4,60
1 1/2"	2"	115	11,50
2"	Flange DN 50	115	21,50

DN	Wall plate	
	L mm	B mm
1"	300	100
1 1/4"	300	100
1 1/2"	590	190
2"	590	190