

Order no.	Version	Appli- cation	PN	DN	Thread	PE pipe Ø mm	
<b>2681</b>	<b>ISO Combination Tapping Valve DN 1"</b> with 2" male iron thread for mounting onto saddle and 1½" male iron thread <u>only for ISO push-fit fitting No. 6221F</u> (without ISO push-fit fitting)	cold water other applications on request	16	1"	2" - 1½"		●
<b>2680</b>	<b>ISO Combination Tapping Valve DN 1"</b> with 2" male iron thread for mounting onto saddle and 1½" male iron thread <u>only for ISO push-fit fitting No. 6221F</u> (complete with choice of ISO push-fit fitting)					25	●
				32	●		
				40	●		
				50	●		
<b>6221F</b>	<b>ISO push-fit fitting</b> with backing washer			1½"	63	●	
					25	●	
					32	●	
					40	●	
<b>5940</b>	<b>Adaptor</b> for HAWLE drilling machine (2")				50	●	
					63	●	
				1½" - 2"		●	

- One valve with 5 ISO push-fit fittings for PE pipes (pipe Ø 25/32/40/50/63 mm) - reduces stockkeeping
- A robust valve of POM
- For the easiest under pressure tapping and the quickest installation of ISO push-fit fittings

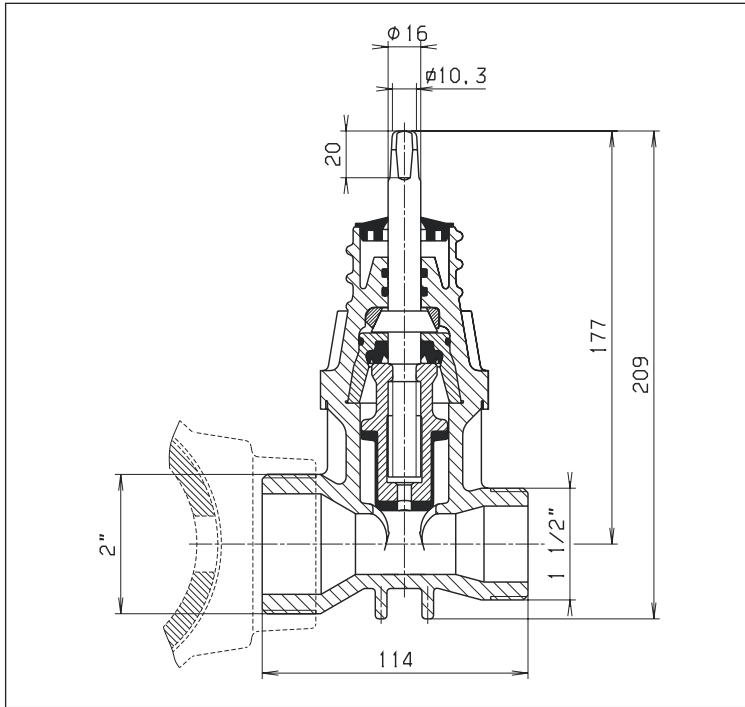
For technical details and instructions for use, see over page.



# ISO Combination Tapping Valve

**Suitable handwheel:** No. 7800  
**Suitable extension spindles:** rigid No. 9101, telescopic: No. 9601

**Suitable surface boxes:** rigid No. 1550 light duty, rigid No. 1650 heavy duty, telescopic: No. 1850



## No. 2681 Tapping Valve DN 1"

with **2" male iron thread** for mounting onto saddle and **1 1/2" male iron thread** only for ISO push-fit fitting No. 6221F

### Sealing system:

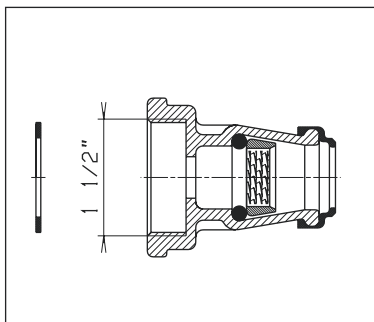
The contact between wedge and body is friction free. Therefore no scuffing or abrasion of the wedge.

### Material:

**Body:** POM  
tensile strength 7000 N/cm<sup>2</sup>

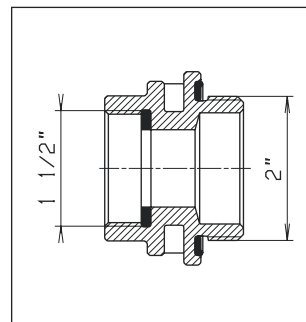
**Wedge:** CuZn39Pb3 (Ms 58)  
wedge rubber of elastomer, suitable for potable water

**Spindle:** stainless steel 1.4021 (X20Cr13)



## No. 6221F ISO push-fit fitting

POM  
female thread 1 1/2"  
push-fit socket for PE pipes up to PN 16, pipe Ø 25/32/40/50/63 mm  
The backing washer (made of Aqua-Gummi) eliminates time-consuming sealing with hemp or PTFE tape.



## No. 5940 Adaptor

G-CuSn7ZnPb (Rg7)  
female thread 1 1/2"  
male thread 2"  
for HAWLE drilling machines No. 5800 or No. 5805

## DRILLING AND ASSEMBLY INSTRUCTIONS

### 1. Mounting onto the saddle:

Screw the 2" male thread into the female thread of the saddle.

### 2. Drilling:

Open the valve completely; if necessary use adaptor no. 5940.

### 3. Shut off:

After drilling, retract the drill and close the valve.

### 4. Pipe assembly:

Screw on one of the three ISO push-fit fittings — push the pipe in — finished.

