

for DCI and steel pipes - for under pressure drilling

Please specify pipe material on order !

for GAS according to EN 437

Order no.	Version	Dimensions/DN									
		50	65	80	100	125	150	200	250	300	
3805	with female threaded outlet	1"	●	●	●	●	●	●	●	●	●
		1 1/4"	●	●	●	●	●	●	●	●	●
		1 1/2"			●	●	●	●	●	●	●
		2"			●	●	●	●	●	●	●

larger sizes on request; surcharge for electrical earthing arrangement

up to PN 4

Design features

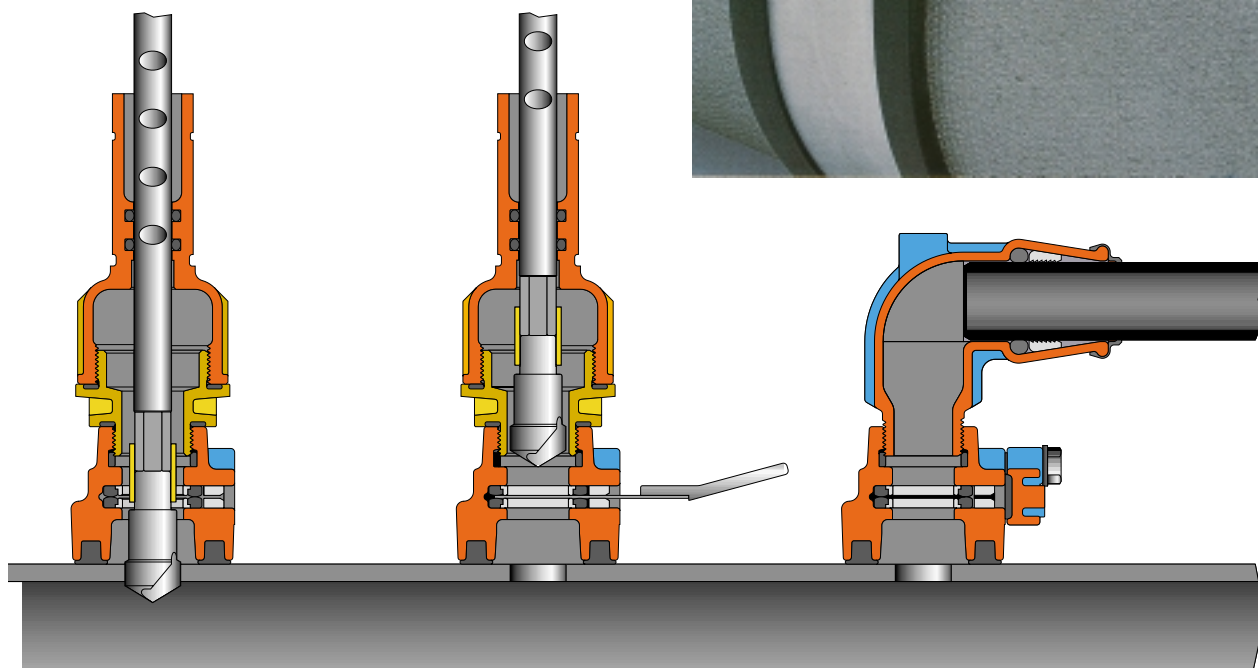
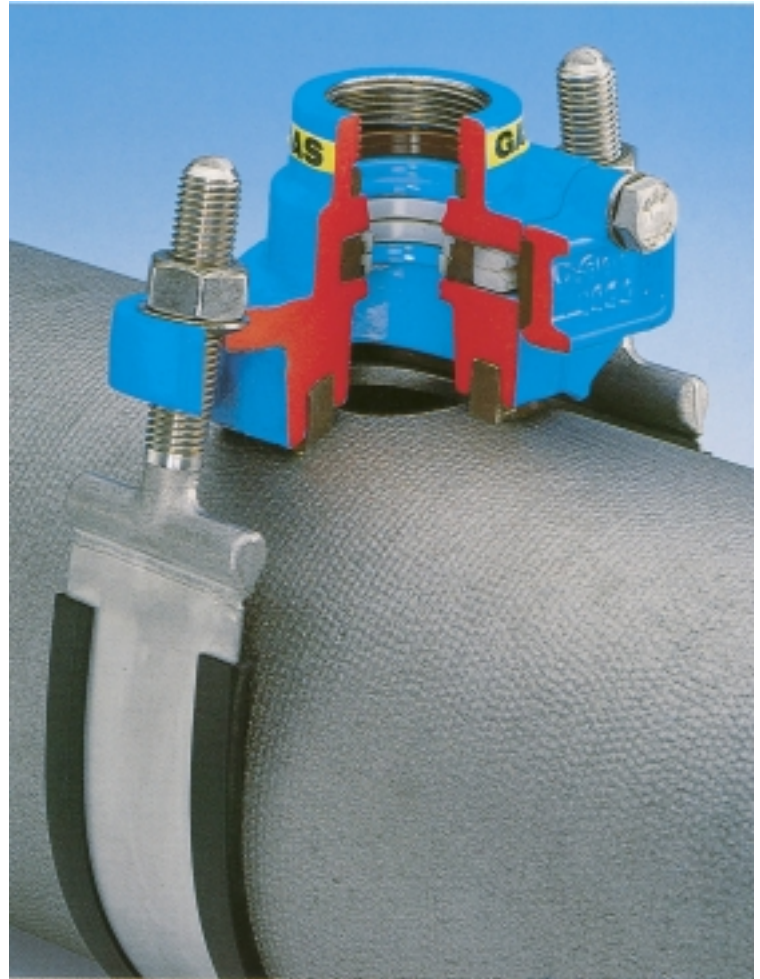
- stainless steel rubber insulated strap
- solid epoxy powder coated body
- flexible wrap around straps for easy installation
- favourable angle of contact
- the saddle seal is moulded to fit the pipe diameter and is prefixed in the saddle body
- easily accessible nuts with stainless steel dished washers
- can be pressure tested from both directions

Drilling instructions

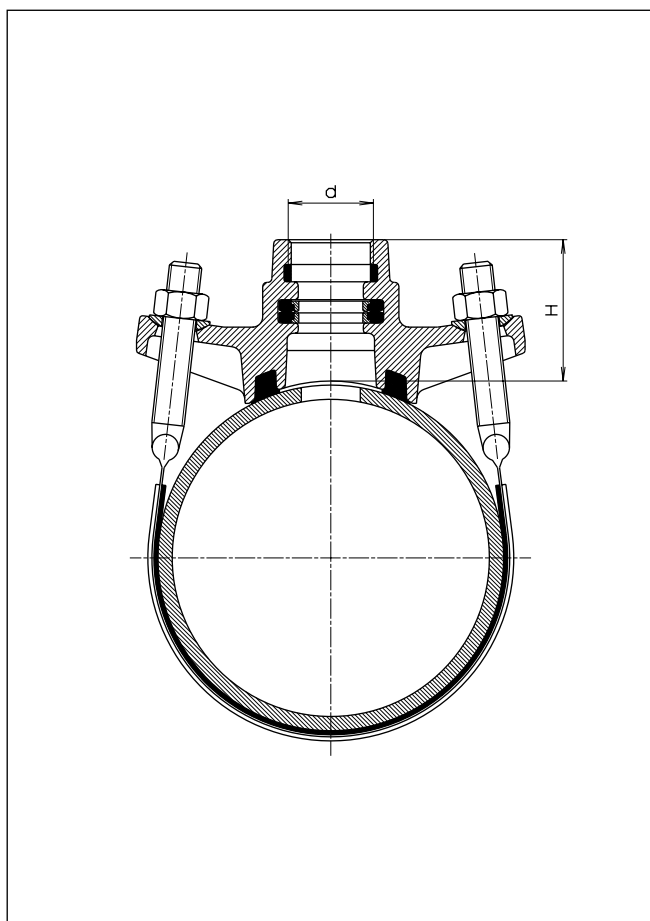
Drilling: screw off cover — drill the pipe with a drilling machine (Hawle drilling machines, see special leaflets) — retract the drill

Shut-off: lubricate the saddle blade (Order no. 8401) — insert it — shut-off

Connection: connect the pipe — retract the saddle blade — screw on the cover



Shut-Off Saddle with O ring



No. 3805

Shut-Off Saddle with O ring
with female thread outlet DIN 2999

Material:

- Saddle body: ductile iron
epoxy powder coated
- Cover: POM, glass fiber reinforced
- Seals: elastomer - DIN 3535
- O ring carrier: POM
- Strap: 1,5 mm gauge, stainless steel 1.4571-
DIN 17006 (X10CrNiMoTi 18 10)
- Strap insulation: elastomer
- Bolts: M 16 - stainless steel 1.4408 -
DIN 17006 (G-X6CrNiMo 18 10)
- Nuts: DIN 934, stainless & acid resistant steel
1.4401 - DIN 17006 (X5CrNiMo 18 10)
(molybdenum coating)

Threaded outlet		Dimensions/DN								
		50	65	80	100	125	150	200	250	300
1"	Weight kg	2,10	2,10	2,60	2,70	3,10	3,20	4,00	4,60	4,70
	H	67	68	69	69	70	70	80	82	82
1 1/4"	Weight kg	2,10	2,10	2,70	2,70	3,20	3,30	4,10	4,70	4,70
	H	70	71	72	72	73	73	80	82	82
1 1/2"	Weight kg			3,00	3,00	3,60	3,70	4,30	4,90	4,90
	H			73	73	74	74	80	82	82
2"	Weight kg			3,10	3,10	3,80	3,80	4,60	5,30	5,40
	H			78	78	78	78	81	83	83