

for GAS according to EN 437

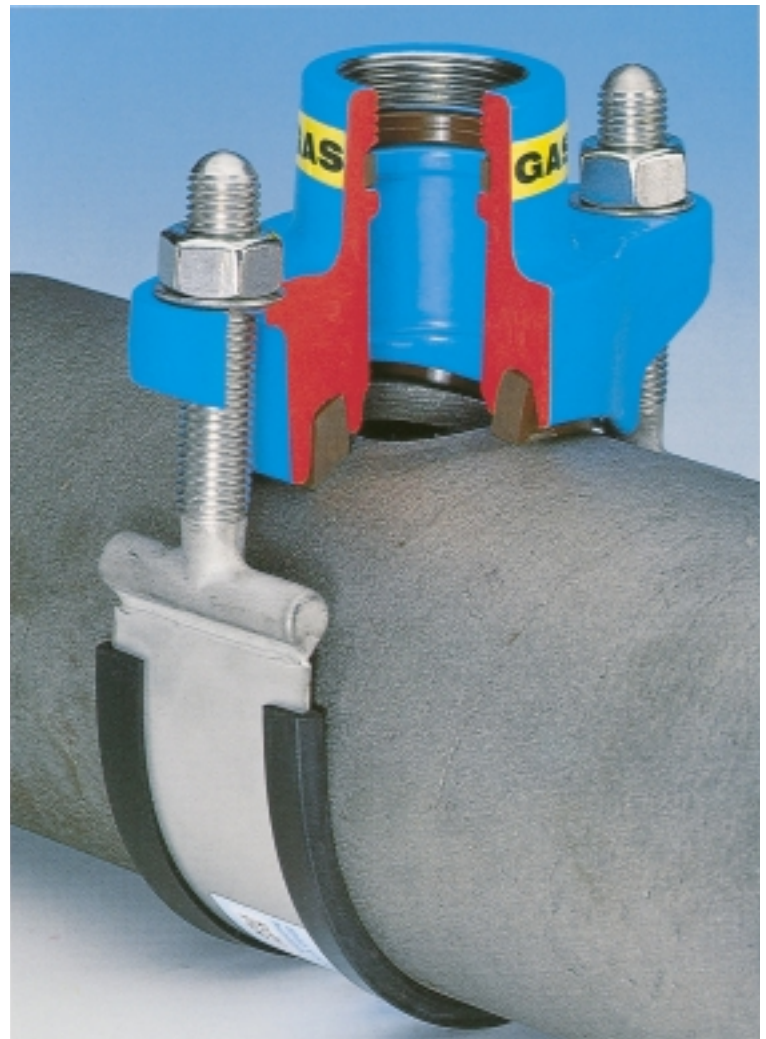
Order no.	Version	Dimensions/DN													
		50	65	80	100	125	150	200	250	300	350	400	450	500	600
3505	Universal Pipe Saddle	1"	●	●	●	●	●	●	●	●	●				
		1 1/4"	●	●	●	●	●	●	●	●	●				
		1 1/2"			●	●	●	●	●	●	●				
	with female thread outlet	2"			●	●	●	●	●	●	●	●	●	●	●
		2 1/2"						●	●	●	●	●	●	●	●
		3"						●	●	●	●	●	●	●	●
3510	Universal Pipe Saddle	DN 40			●	●	●	●	●	●					
		DN 50			●	●	●	●	●	●					
		DN 80						●	●	●	●	●	●	●	●
	with flange outlet	DN 100						●	●	●	●	●	●	●	●
		DN 150										●	●	●	●
3535	Undrilled saddle (see page E 1/2)	●	●	●	●	●	●	●	●	●	●	●	●	●	

larger sizes on request, surcharge for electrical earthing arrangement

Design features

- stainless steel rubber insulated strap
- solid epoxy powder coated body
- favourable angle of contact
- flexible wrap around straps for easy installation
- the saddle seal is moulded to fit the pipe diameter and is prefixed in the saddle body
- easily accessible nut on stainless steel dished washer (No. 3505/3535) resp. on stainless steel flat washer (No. 3510)

for CI and steel pipes
Please specify pipe material on order
up to PN 4



Universal Pipe Saddle, Undrilled Saddle

Material:

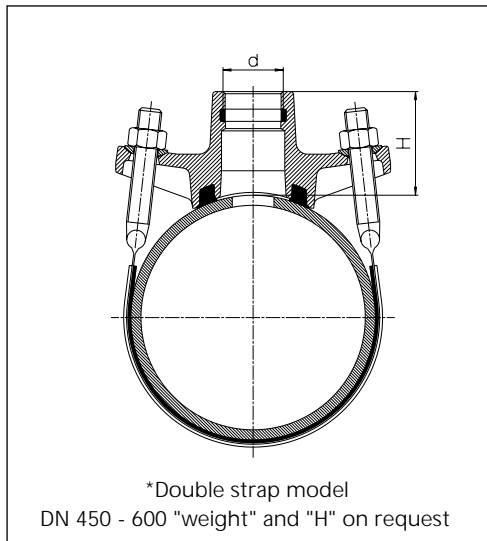
Saddle body: ductile iron, epoxy powder coated
 Saddle seal: elastomer - DIN 3535
 Strap: 1.5 mm gauge, stainless steel 1.4571 DIN 17006 (X10 CrNiMoTi 18 10)

Strap insulation: elastomer

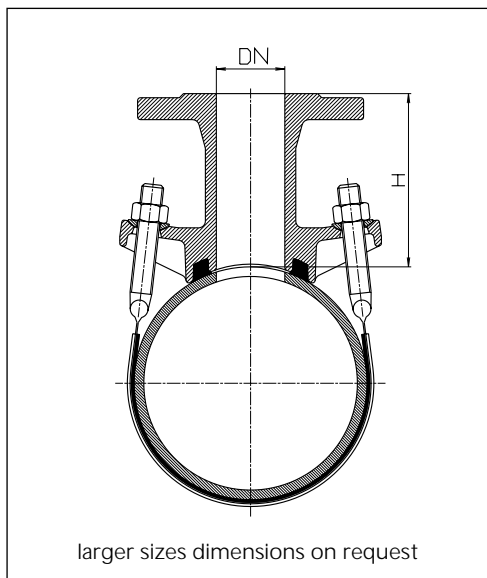
Bolts: M 16 - stainless steel 1.4408 DIN 17006 (G-X6 Cr NiMo 18 10)

Nuts: DIN 934, rust & acid proof steel 1.4401, DIN 17006 (X5 CrNiMo 18 10) molybdenum coating

No. 3505 Universal Pipe Saddles with female threaded outlet DIN 2999 used in conjunction with shut-off adaptor No. 3760 for under pressure drilling



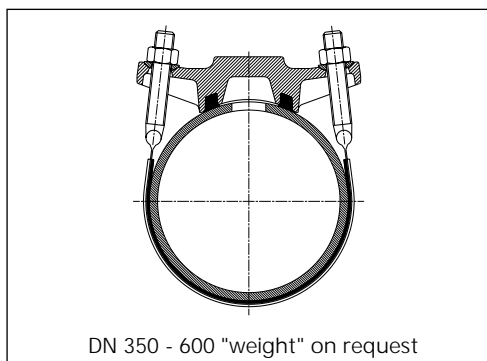
Threaded outlet		Dimensions/DN										
		50	65	80	100	125	150	200	250	300	350	400
1"	Weight kg	2,30	2,20	2,40	2,50	3,30	3,40	3,90	4,60	4,70		
	H	64	64	61	61	78	78	86	89	89		
1 1/4"	Weight kg	2,30	2,20	2,40	2,50	3,40	3,50	4,10	4,60	4,70		
	H	64	64	61	61	78	78	86	89	89		
1 1/2"	Weight kg			2,40	2,50	3,60	3,60	4,20	4,80	4,90		
	H			57	57	78	78	86	89	89		
2"	Weight kg			2,45	2,50	3,80	3,90	4,40	5,00	5,10	6,40	6,60
	H			57	57	78	78	86	89	89	74*	74*
2 1/2"	Weight kg						5,30	5,70	6,20	6,40	6,4	6,60
	H						54*	56*	56*	56*	63*	63*
3"	Weight kg						5,40	5,40	5,90	6,00	6,4	6,60
	H						54*	56*	56*	56*	64*	64*



No. 3510 Universal Pipe Saddle with flanged outlet - EN 1092-2

all models have a double strap
 flange drilling to DIN 2501 - PN 10

Flanged outlet DN		Dimensions/DN											
		80	100	125	150	200	250	300	350	400	450	500	600
40	Weight kg	6,60	6,60	6,80	6,90	7,70	7,90	8,00					
	H	114	114	126	126	145	153	153					
50	Weight kg	6,60	6,60	6,80	6,90	7,70	7,90	8,00					
	H	114	114	126	126	145	153	153					
80	Weight kg				8,80	10,00	10,40	10,50	11,00	12,20	12,30	12,50	11,80
	H				135	150	147	147	146	146	146	146	146
100	Weight kg				10,30	10,10	11,60	11,70	12,50	12,70	12,80	12,90	13,30
	H				140	155	158	158	165	165	165	165	165
150	Weight kg									27,50	28,00	29,00	30,50
	H									186	186	186	186



No. 3535 Undrilled Saddle

ductile iron, epoxy powder coated

Dimensions	50	65	80	100	125	150	200	250	300
Weight kg	2,60	2,60	2,70	2,70	3,50	3,60	4,30	4,80	4,90