

for GAS according to EN 437



The prescribed pressure test for gas valves will be attested by certificate in accordance with DIN 50049 (EN 10204) - 3.1.B.

Order no.	PN	DN	Dimensions/DN 1			
			65	80	100	150
4345E2	16	80		●		
		100		●	●	
		150	●	●	●	●
		200		●	●	●

other dimensions are available in E-type

Flanged Tee Piece with one integral E2 Elypso Valve short style, equal and reduced

The short style provides for space saving installation and lower material, labour, transport and stockholding costs.

The compact design enables the valve chamber to be made from sectional concrete giving typical savings of 25 % in chamber construction costs.

Note:

Combining the E2 Combi-T with E2 Elypso Reducing Valves can provide solutions to many common problems.

Material and design features:

Body and bonnet of ductile iron EN-GJS-400-18 according to EN 1563 (GGG 400 - DIN 1693) inside and outside epoxy powder coated according to DIN 30677-T2 in accordance with DIN 3476 and all quality and test requirements of RAL quality mark 662 (GSK - Gütegemeinschaft Schwerer Korrosionsschutz - the association for high quality corrosion protection)

Wedge of ductile iron EN-GJS-400-18 according to EN 1563 (GGG 400 - DIN 1693) inside and outside fully rubberized with vulcanized elastomer - DIN 3535, with drain hole

Wedge nut of dezincification resistant brass CuZn36Pb3As

Wedge guide of wear resistant plastic with high gliding features; optimally placed design guarantees lowest wear and tear and lowest closing torques

Stainless steel spindle St 1.4021 (X20Cr13), with rolled thread and O ring slide faces

Edge protecting ring of PE avoids damages during transport and storage

Allen screws St 8.8 DIN 912 absolutely corrosion protected by being sunk into the body and sealed, and by passing through bonnet gasket

Flanges according to EN 1092-2 (DIN 28605) drilled to DIN 2501 - PN 10 (standard); for DIN 2501 - PN 16 in size of DN 200 mm please specify on order - other standards on request !



E2 Combi-T

Standard version: without handwheel and extension spindle

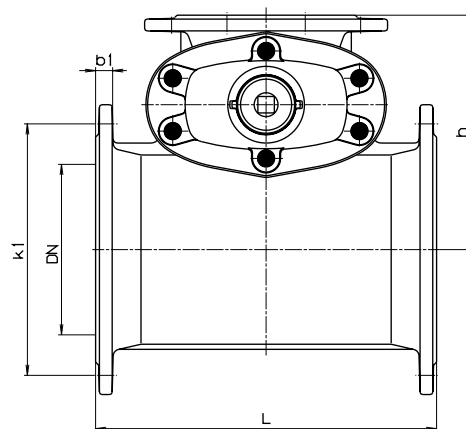
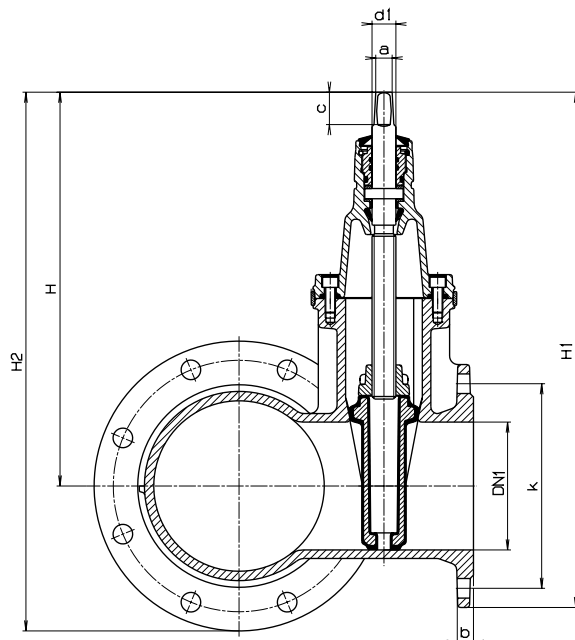
Special versions: on request

Suitable accessories:

- Handwheel:** No. 7800
- Extension Spindles:** rigid No. 9000E2
telescopic No. 9500E2
- Surfaces Boxes:** rigid No. 1755, telescopic No. 2055

Design features:

- easy retrofitting of position indicator and automatic actuator on the standard bonnet
- one extension spindle for several dimensions
- optimally placed wedge guide of wear resistant plastic guarantees lowest wear and tear and lowest closing torques, suitable for frequent operations at a differential pressure up to 16 bar
- 100 % suitable for operation by automatic actuators
- generous oversizing of the required thread length in the wedge nut according to prEN 1171 guarantees highest possible strength
- O rings embedded in non-corrosive material (according to DIN 3547-T1)
- replaceable O rings under pressure (according to ISO 7259)



DN	DN 1	E2 Combi-T					Flanges				Spindle			Weight kg
		L	H	H 1	H 2	h	k	b	k 1	b 1	a	c	d 1	
80	80	280	336	436	436	170	160	19	160	19	17,3	35	25	25,0
100	80	280	336	436	446	200	180	19	180	19	17,3	35	25	30,5
100	100	310	373	483	483	200	125	19	180	19	19,3	38	25	34,5
150	65	260	328	420	470	210	145	19	240	19	17,3	35	25	33,0
150	80	280	336	436	473	220	160	19	240	19	17,3	35	25	36,5
150	100	310	373	483	516	220	180	19	240	19	19,3	38	25	40,0
150	150	400	462	605	605	250	240	19	240	19	19,3	38	28	56,0
200	80	280	336	436	506	250	160	19	295	20	17,3	35	25	46,5
200	100	310	373	483	543	250	180	19	295	20	19,3	38	25	49,0
200	150	400	462	605	632	275	240	19	295	20	19,3	38	28	66,0